

Please Read!!!

USB Driver Install Instructions

Revised March 8, 2009

These instructions are for installing the USB Driver for cutting plotters sold by MBKP International LLC. These instructions were made for Windows XP Home edition. *If you are using Windows Vista 32 bit the plotters should work for you but we do not support your operating system.*

Please note: Our Plotters will NOT work on Windows XP PRO or Windows Vista 64 bit.

This driver must be installed before installing any sign making software.

For instructions on installing ArtCut 2009 please download the PDF file located at <http://www.mbkpinternational.com/artcut2009install.pdf>

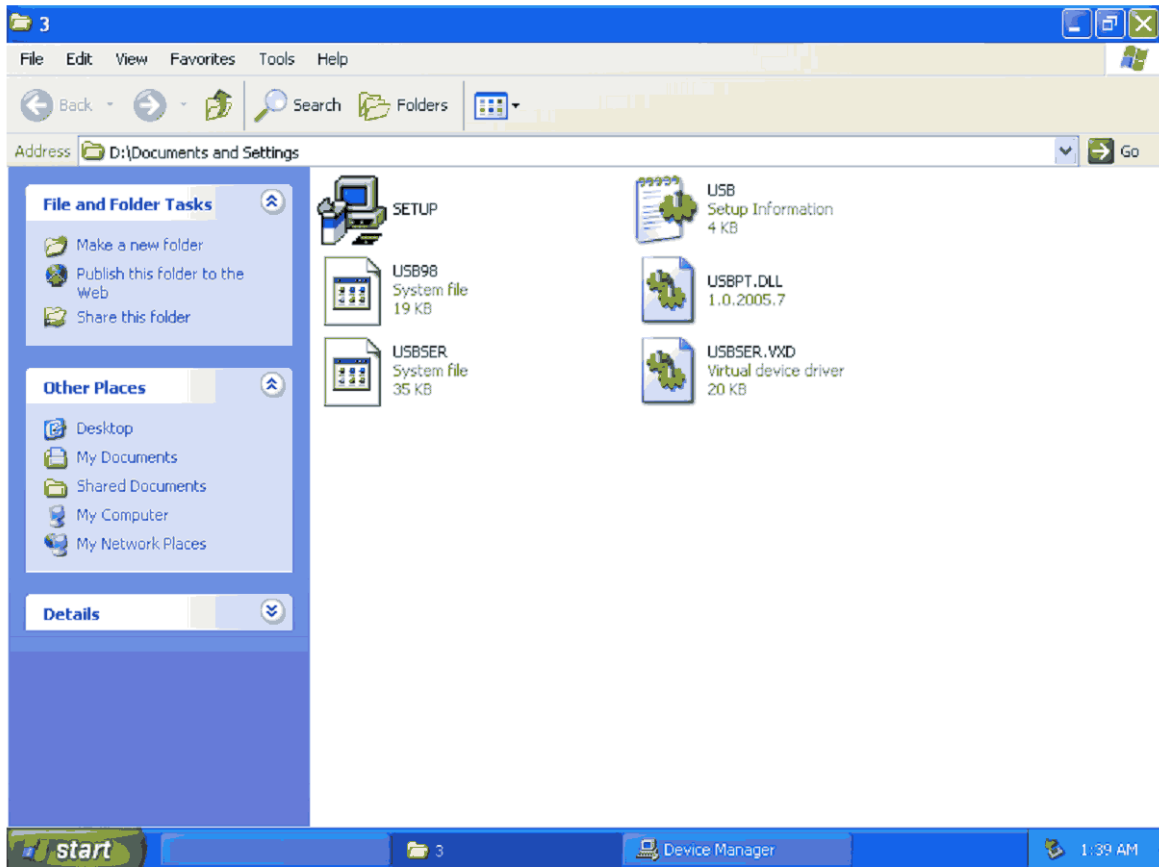
For instructions on installing Flexi Starter 8.6 please download PDF file located at <http://www.mbkpinternational.com/flexiinstall.pdf>

Both programs can be purchased from:

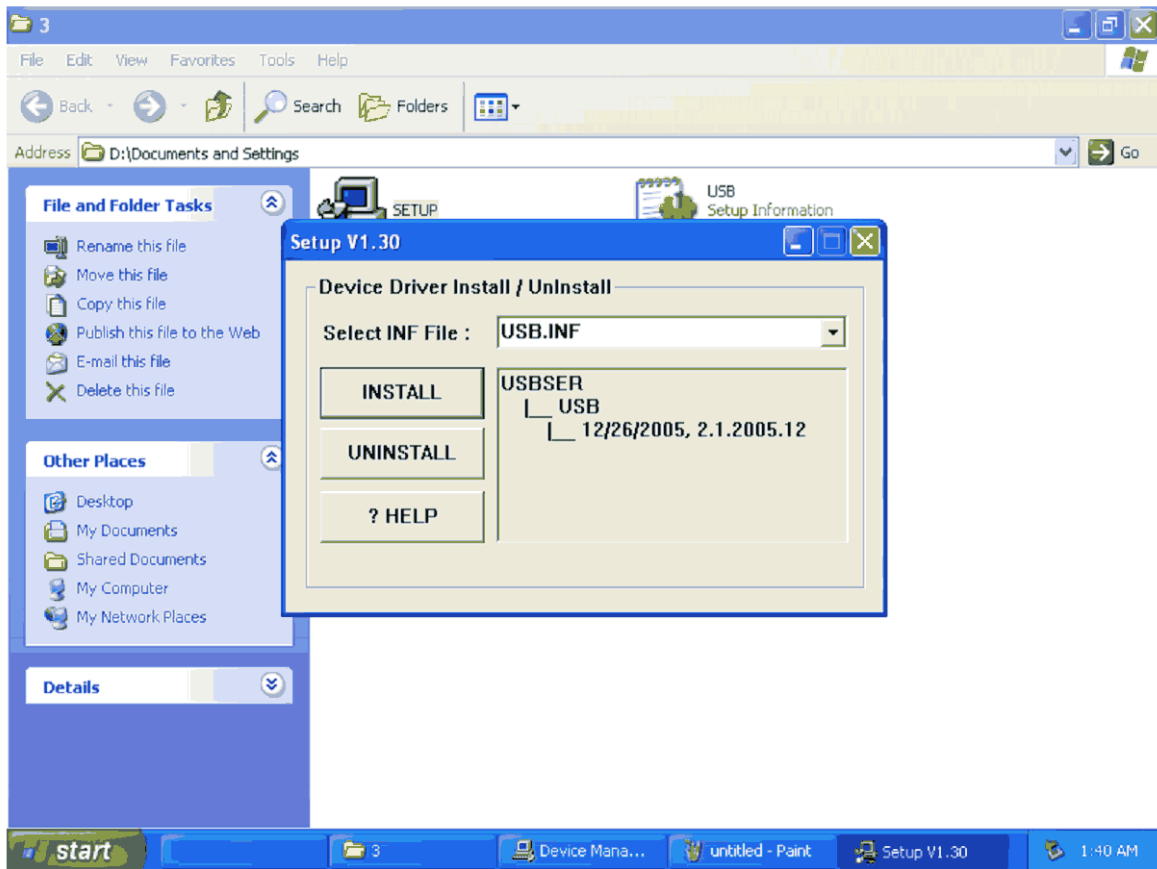
http://www.mbkpinternational.com/artcut_sd1360_cutting_plotter.htm.

We recommend using Flexi Starter as it is a much better program and you can upgrade it to do more. You can also get additional tech support from Flexi. Artcut is a Chinese program and some people are not happy with the translation to English. There is no tech support for Artcut so you must take the time to learn it yourself.

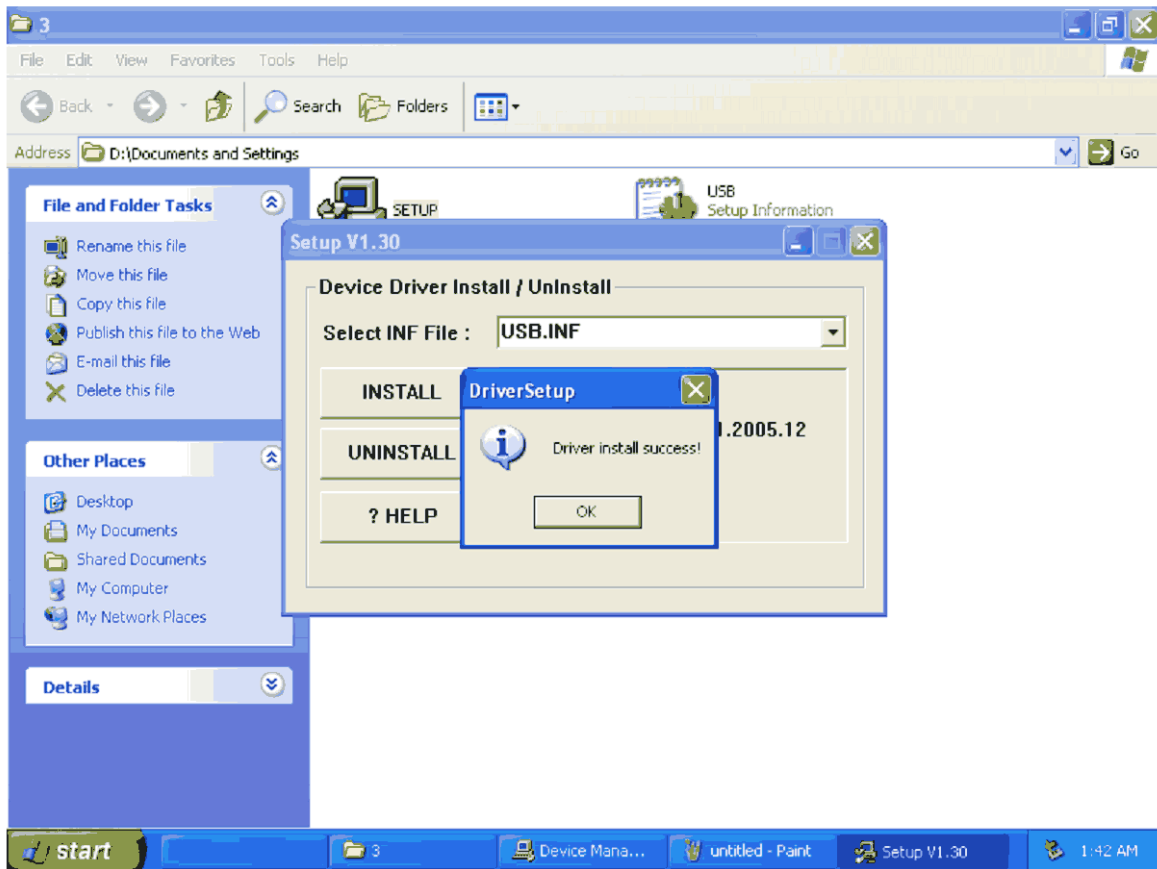
Turn off computer. Use the included USB cable to connect the plotter to your computer. Plug the included power cord into the plotter and turn on plotter. Turn on your computer. When prompted to install driver, click cancel. Place the driver CD in your CD Reader. Click on Start. Click on My Computer. **Locate the drive where you placed the CD and double click it.** You will get the screen below. Now please follow all instructions step by step.



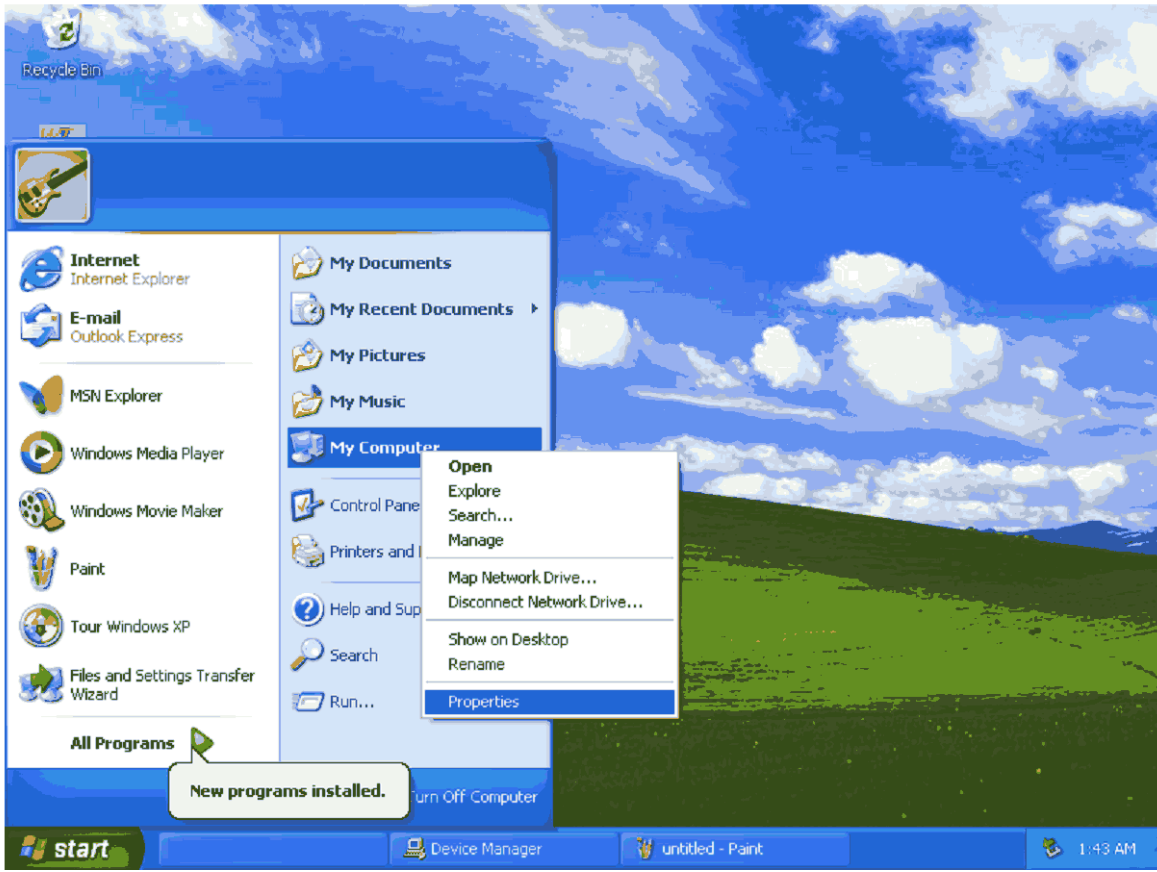
Use USB Driver CD to setup the USB Driver. Left Click on SETUP.



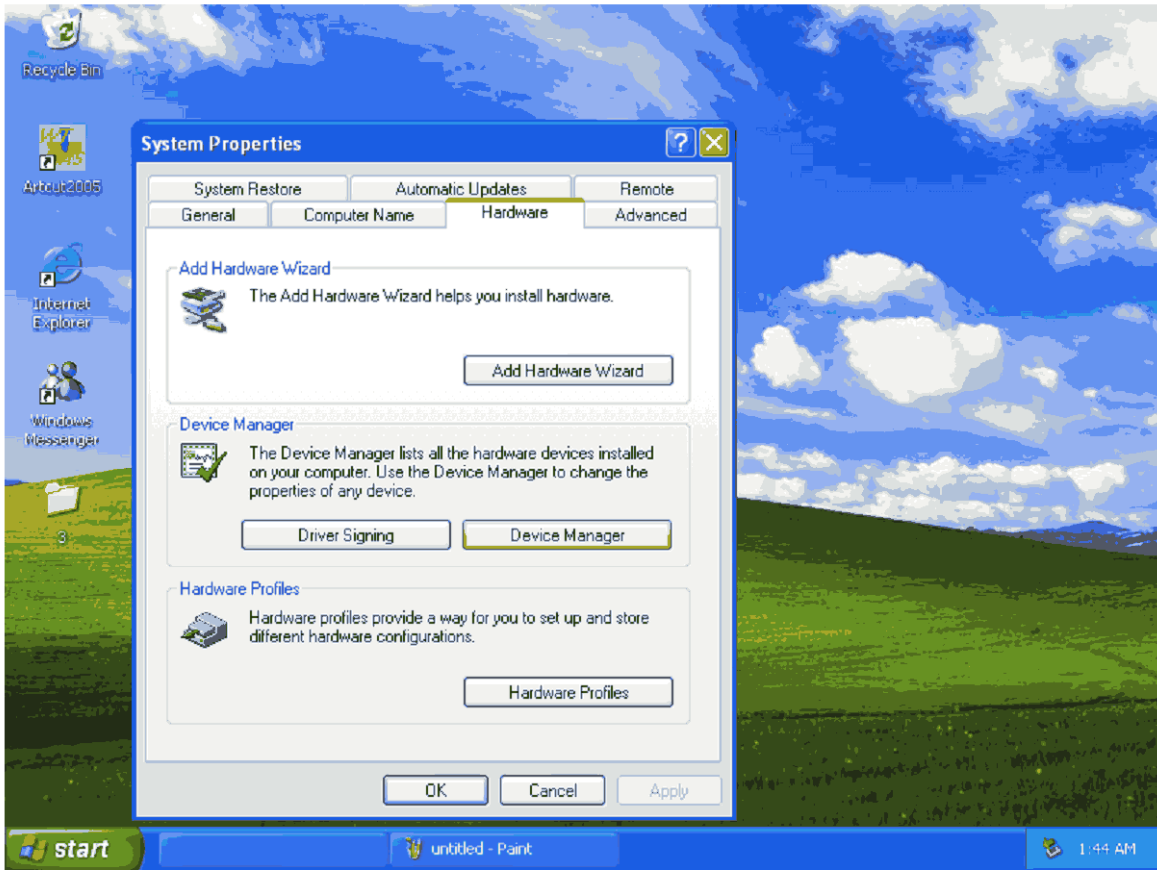
Click on Install. Depending on your computer, this may need to be done up to five times before the driver is installed successfully.



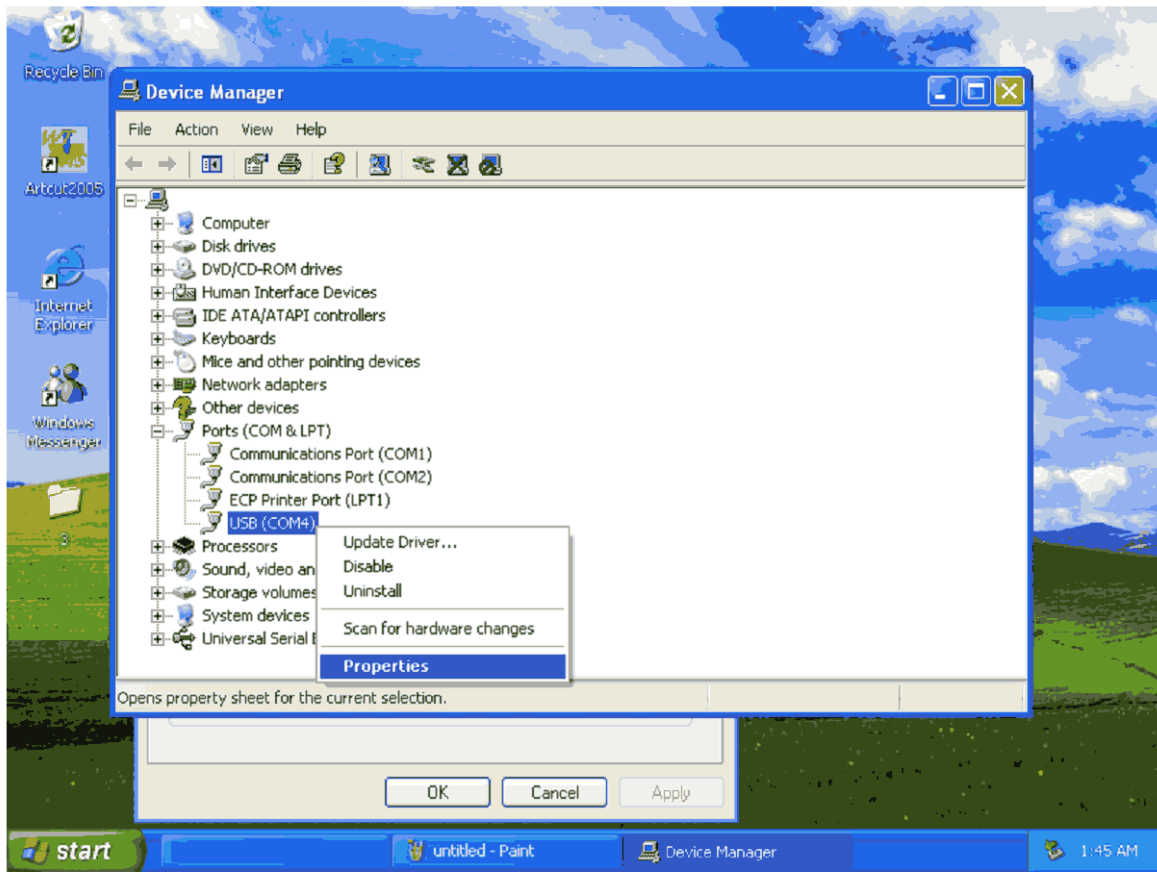
Once you get this screen click ok. Your driver is installed. Now you will need to set up the driver to work properly.



Left click Start. Right click My Computer. Left Click Properties.



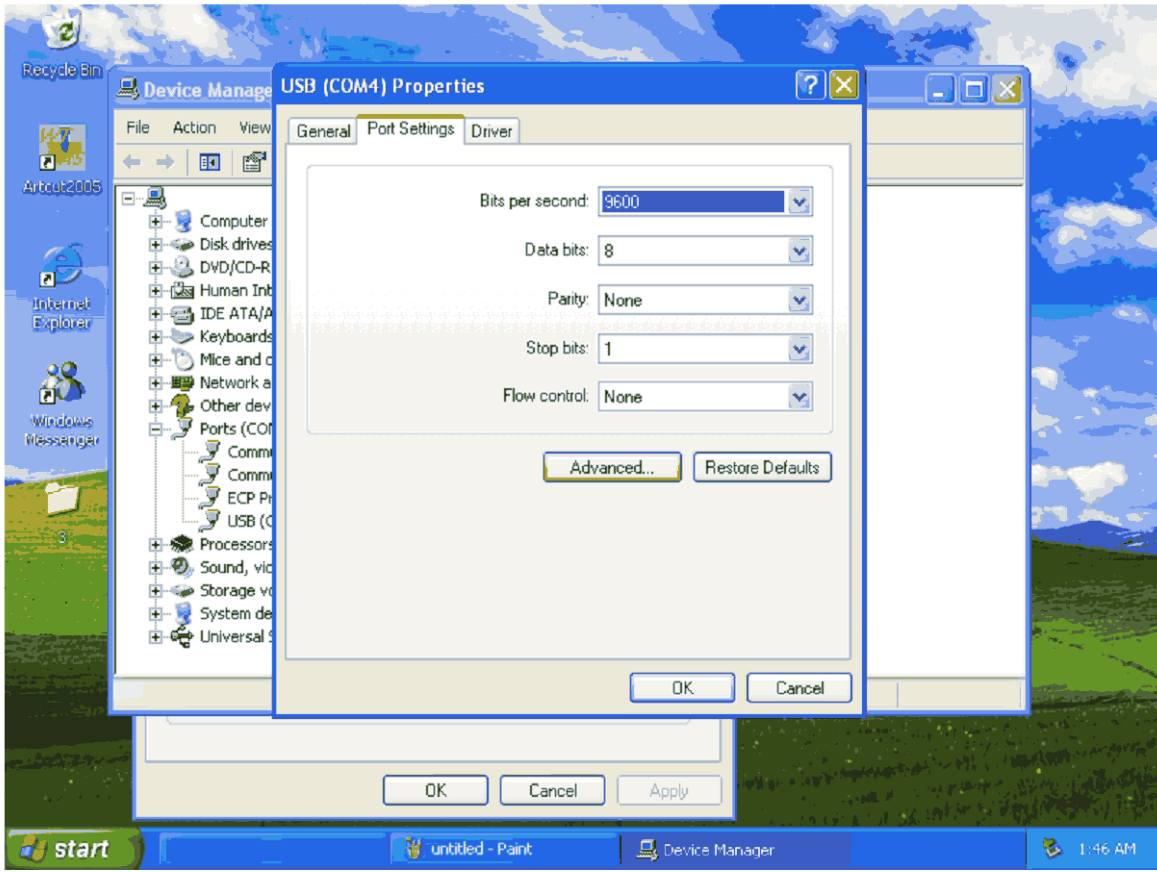
Left click on Hardware tab. Left click Device Manager.



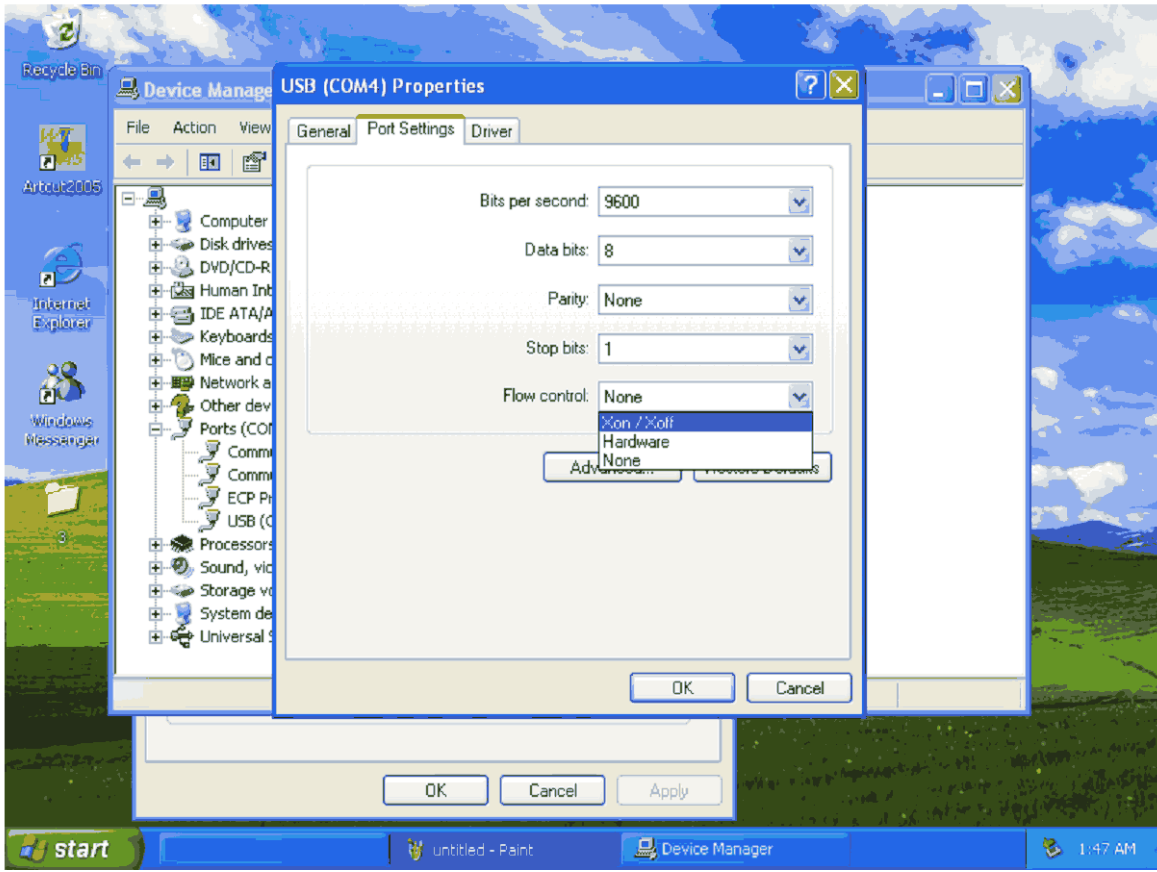
Scroll down to Ports (COM & LPT) and left click on the + symbol to the left which will expand the branch.

Your Plotter will only work on USB (COM1) or USB (COM2) in Windows XP Home. Windows Vista may be different.

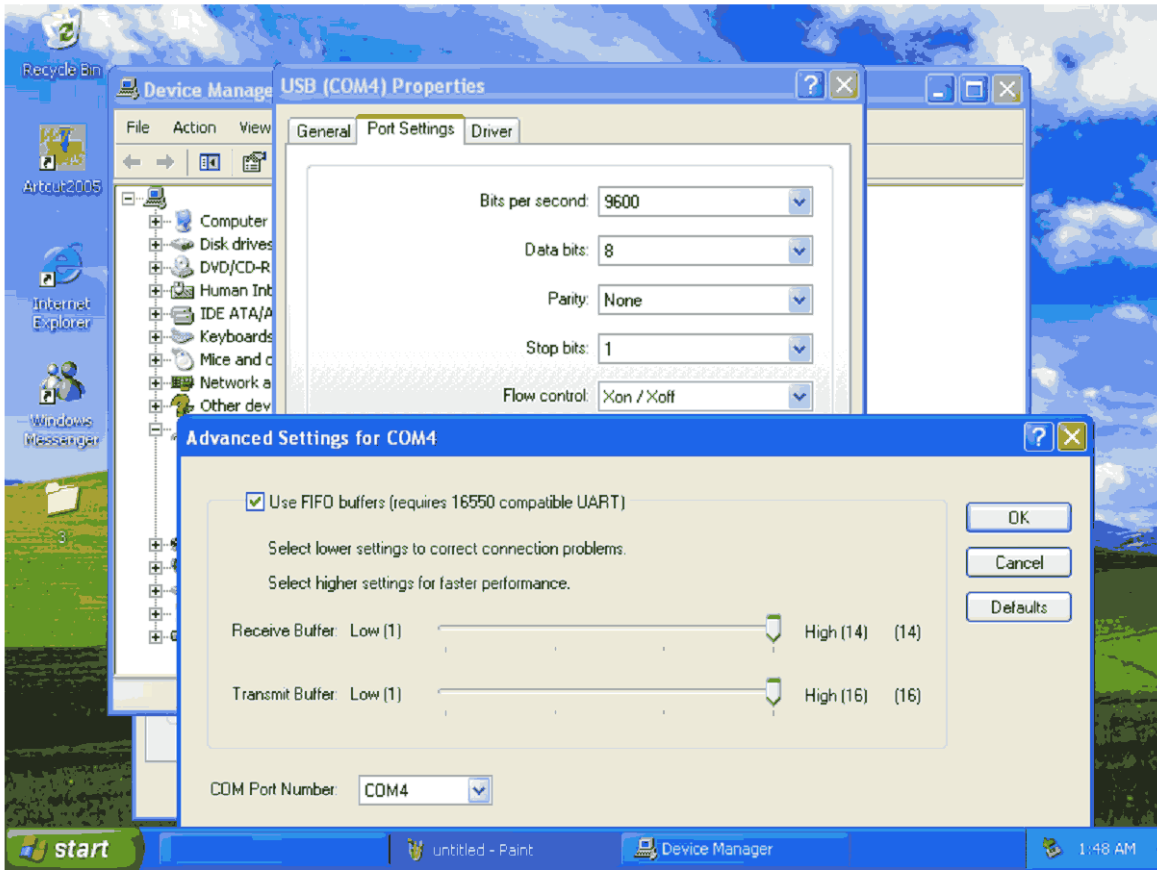
Left click on USB (COM1 or COM2 etc. This photo has USB (COM4), which we will change to COM1 or COM2 later in these instructions.



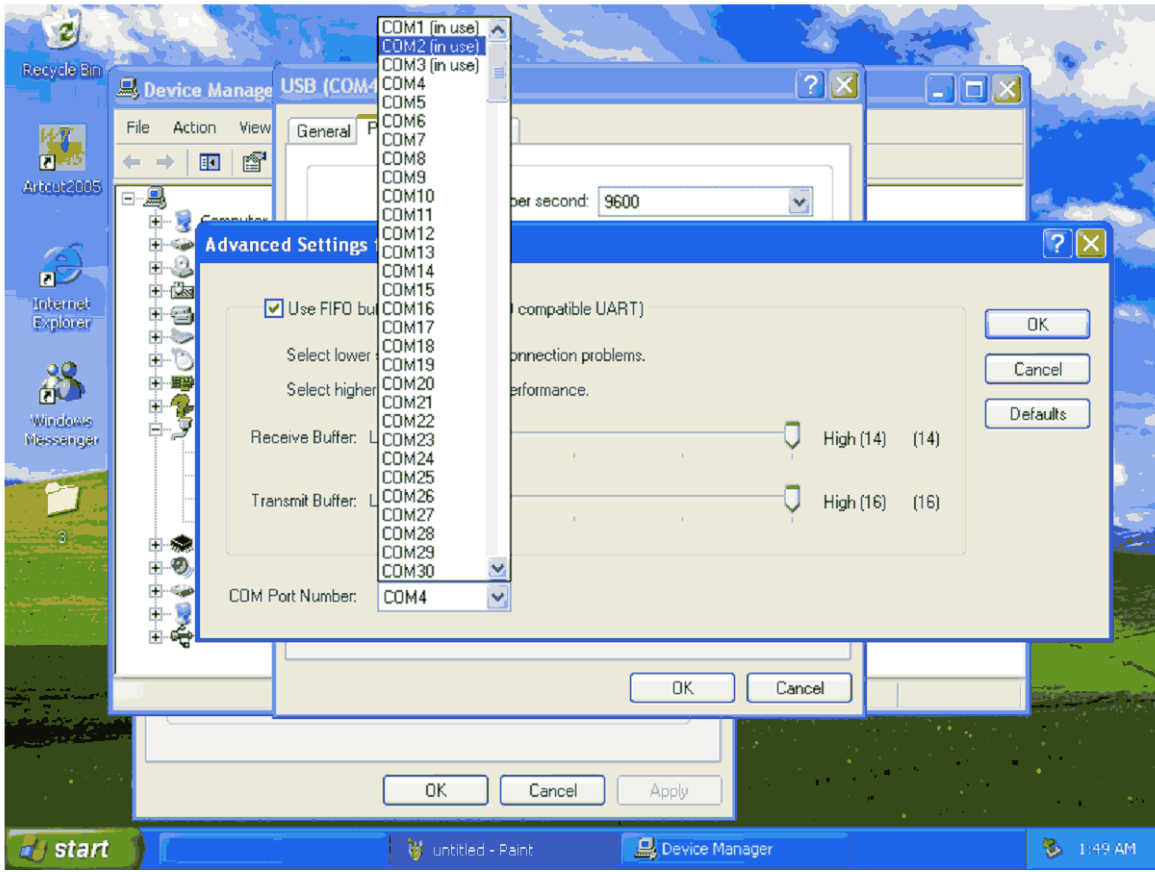
Click on the Port Settings tab.



Change Flow Control to Xon/Xoff.



Left Click on the Advanced button.

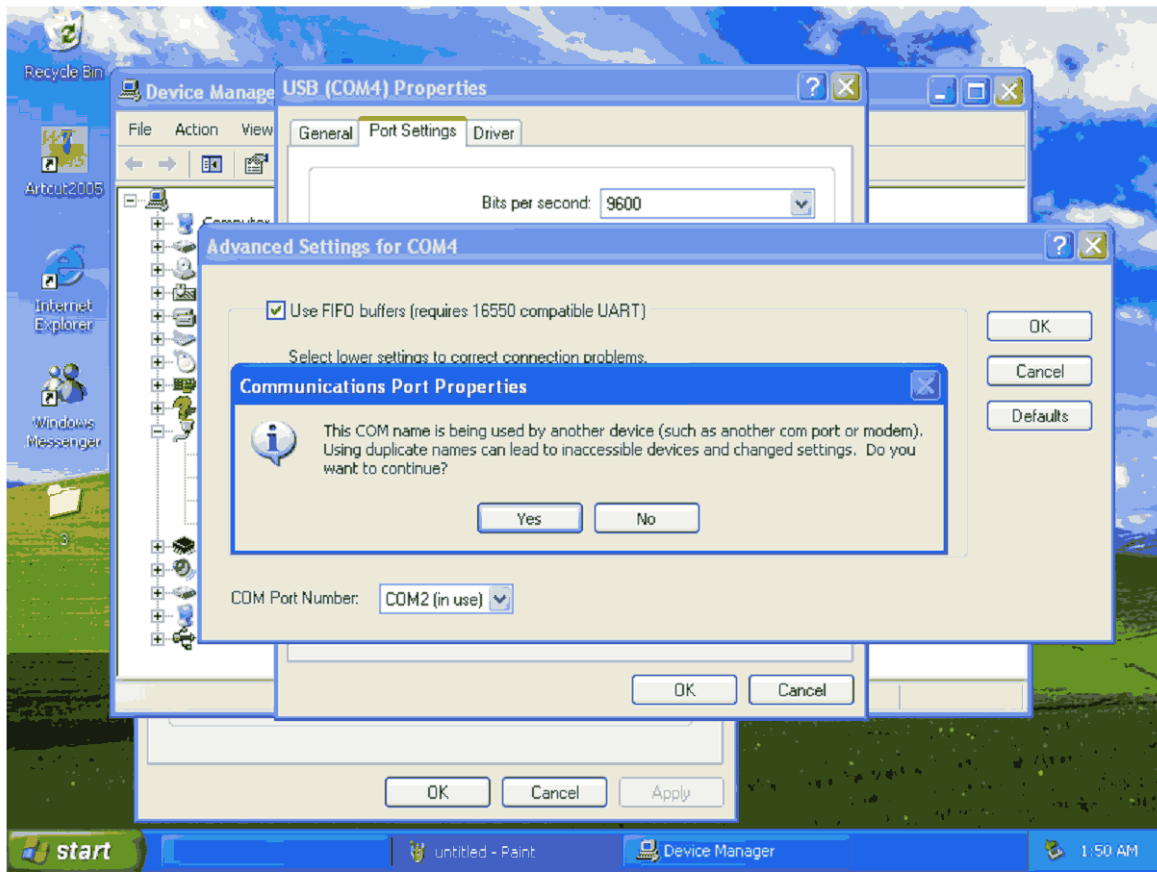


Change COM Port Number to COM1 or COM2.

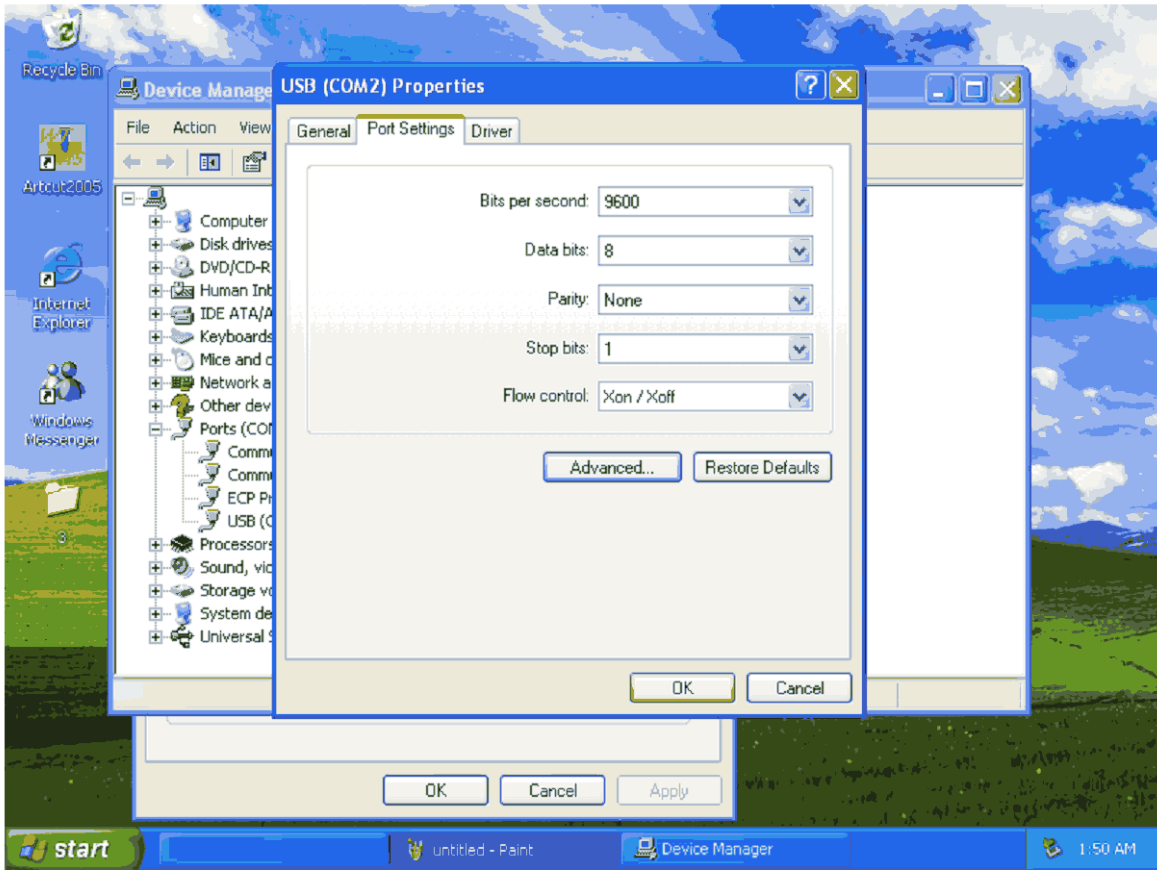
If COM1 and COM2 are in use just choose one and go to the next page.

If the COM Port you choose was not in use you can just click OK on this screen then click OK on the next screen. Then jump to Page 18.

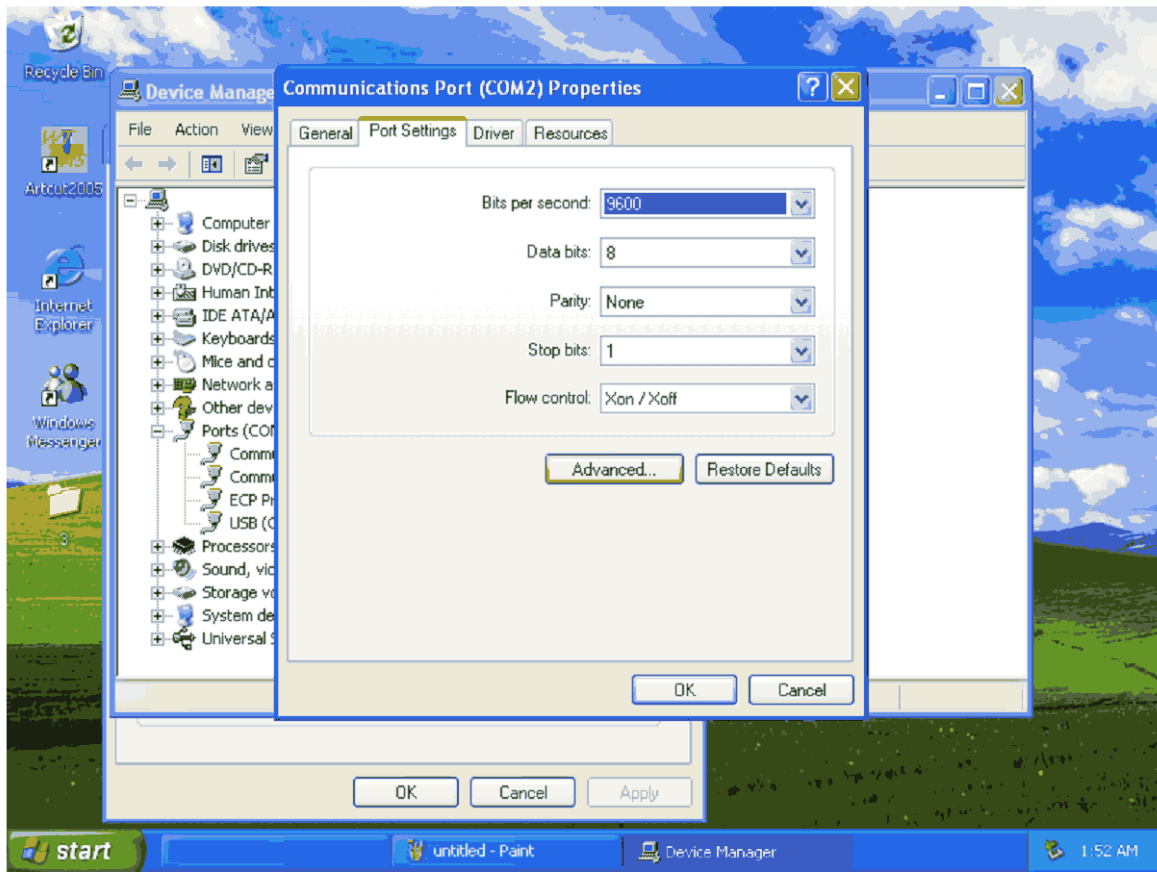
Note: If you cannot get the driver to install or you are not able to see the driver USB (COM#) or it installs but you see a yellow caution sign placed over the driver and you know for sure there are no other devices trying to use the same COM port, try using a different USB cable. Then reinstall the driver.



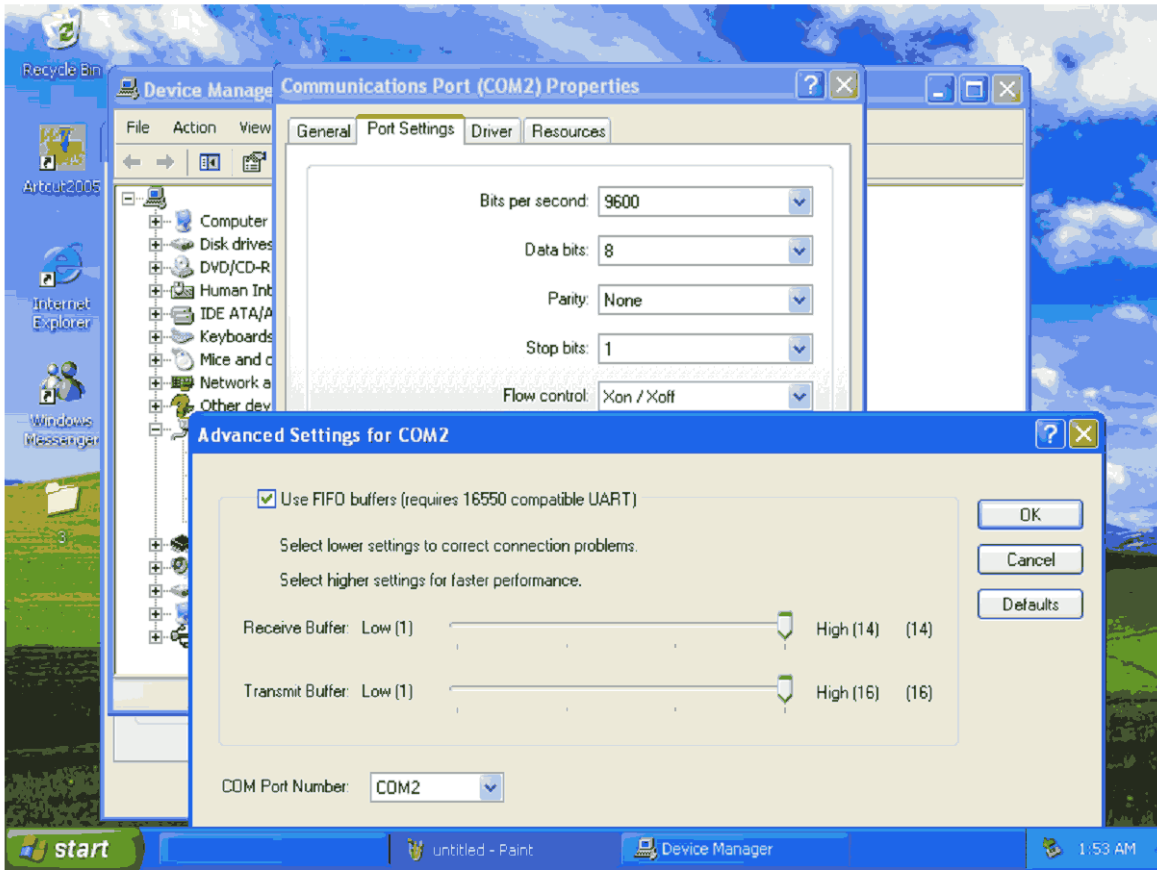
This screen is letting you know that another device is using the COM Port that you selected. You must fix this before you Install ArtCut. Click Yes. We will fix this problem later.



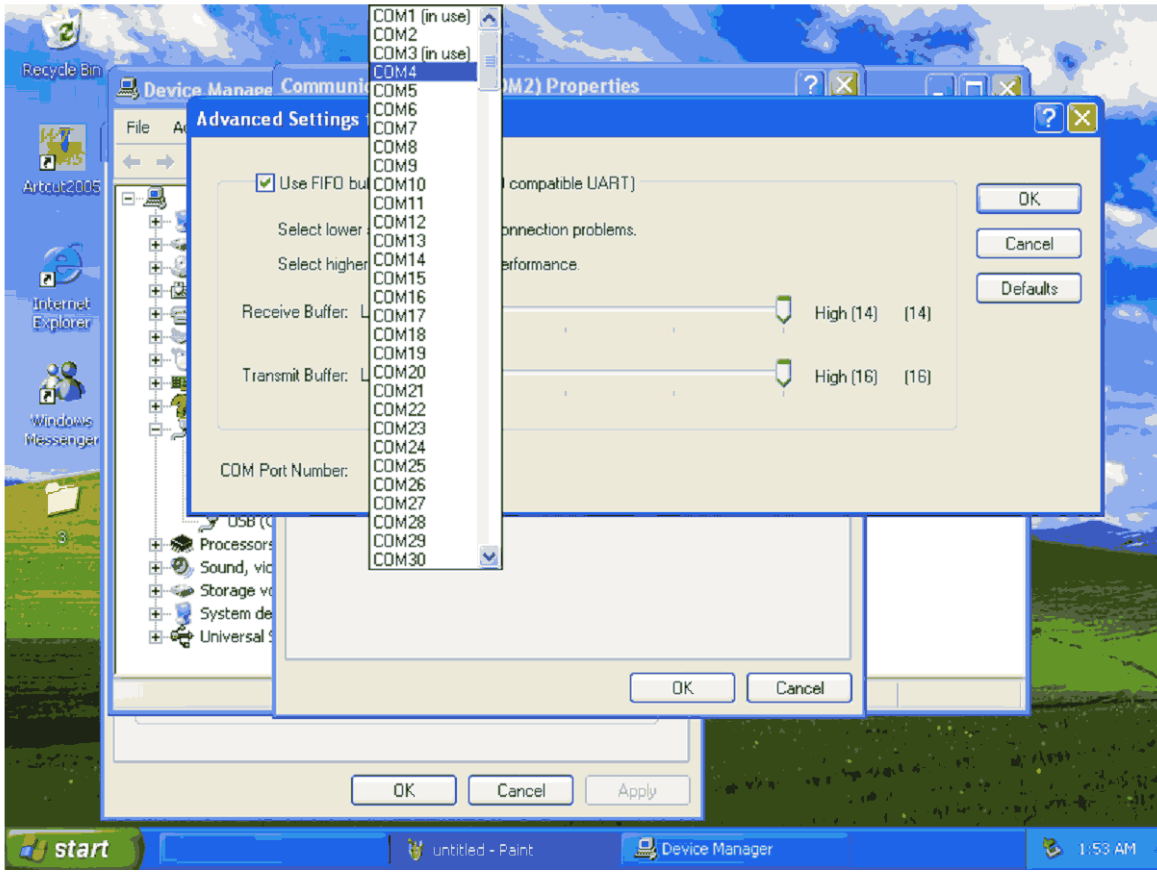
Click OK. Your USB Port is configured. We will now fix the conflict.



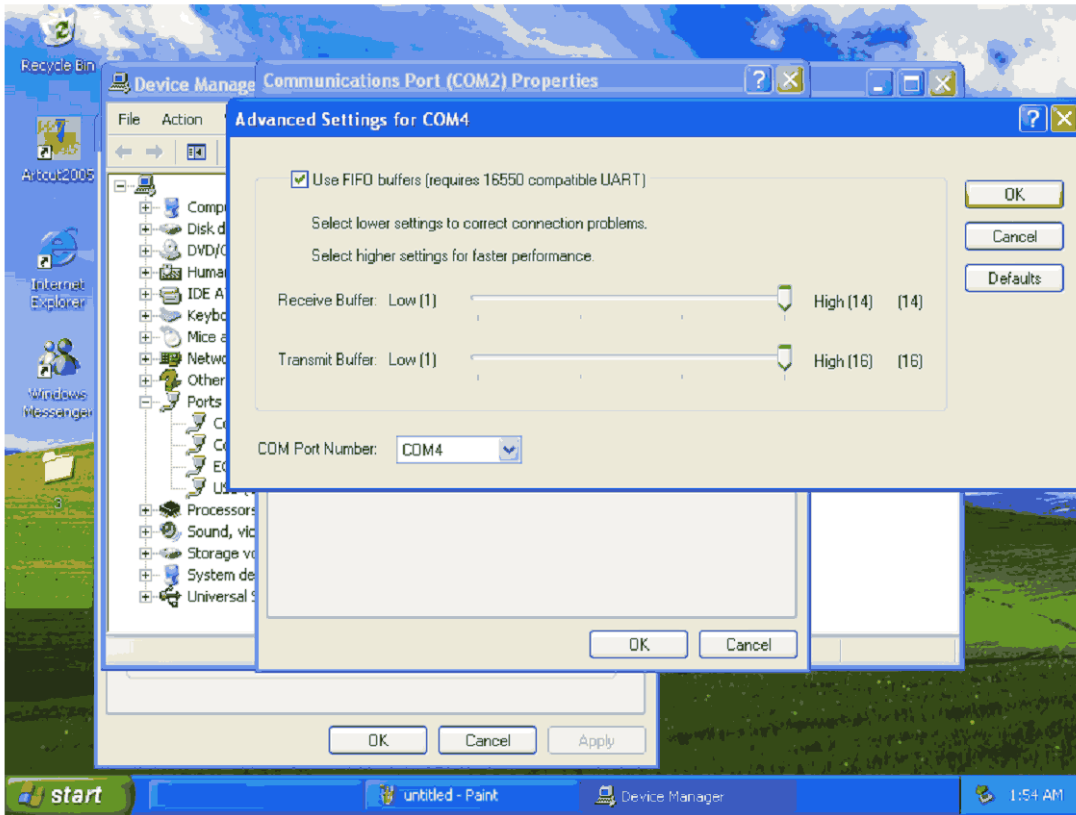
Go to Device Manager again and find the COM Port that is in use by the other device. Open the Properties and Click on Port Settings.



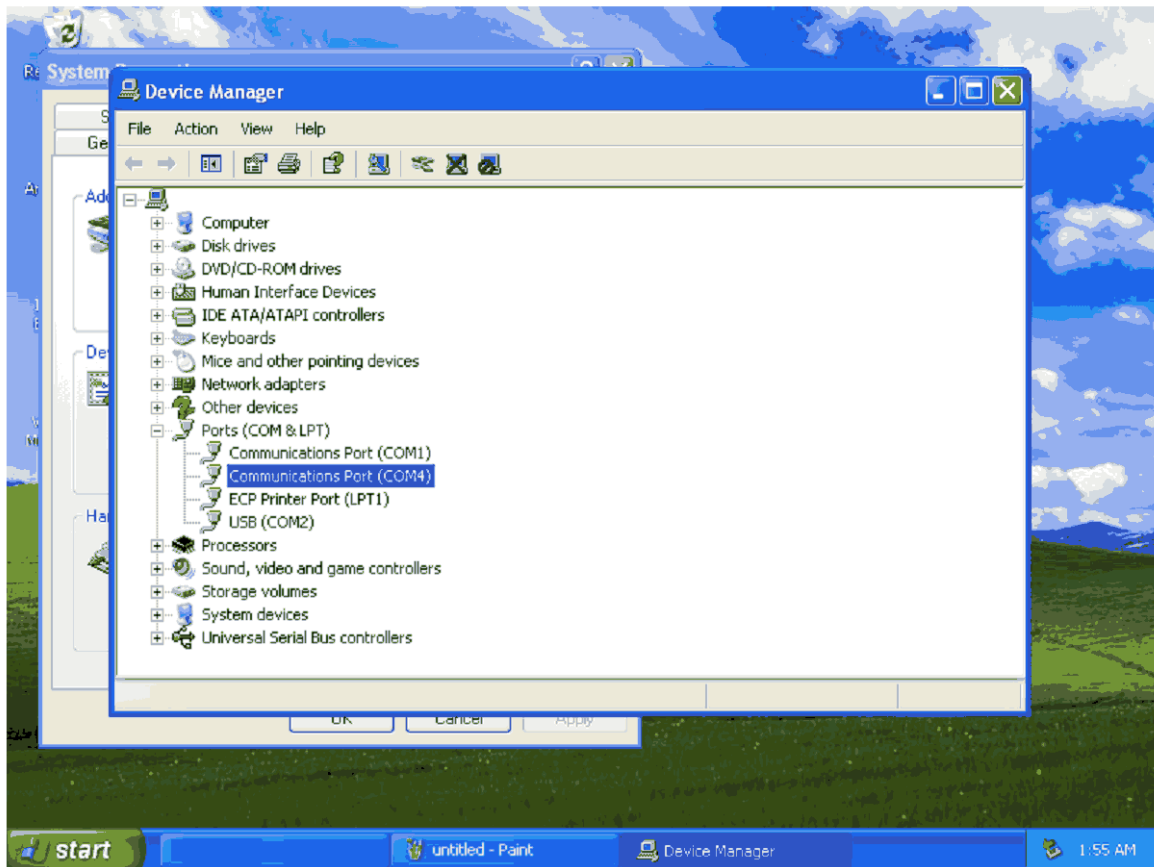
Click on the Advanced button.



Change the Device to another COM Port so it will not interfere with the plotter that you just set up on COM1 or COM2.



Click the OK button.



Restart your Computer!!!

Go back to Device manager. Left Click Start. Right Click My Computer. Left Click Properties. Left Click Hardware tab. Left click Device Manager. Scroll down to Ports (COM & LPT). Click on the + symbol to the left. Notice that all your devices are set up on different ports. This is what you want to see. Remember the USB COM Port has to be USB (COM1) or USB (COM2) on Windows XP Home. Windows Vista 32 bit may be different.

Note: If you cannot get the driver to install or you are not able to see the driver USB (COM#) or it installs but you see a yellow caution sign placed over the driver and you know for sure there are no other devices trying to use the same COM port, try using a different USB cable, then reinstall the driver. The driver must be installed without any errors before installing any sign making software.

Next Step

Install your choice of sign making software. We recommend Flexi Starter as it is a much better program and you can get additional tech support from Flexi. Artcut is not as good and it has no tech support.

For instructions on installing ArtCut 2009 please download the PDF file located at <http://www.mbkpinternational.com/artcut2009install.pdf>

For instructions on installing Flexi Starter 8.6 please download PDF file located at <http://www.mbkpinternational.com/flexiinstall.pdf>

Both programs can be purchased from:

http://www.mbkpinternational.com/artcut_sd1360_cutting_plotter.htm. We recommend using Flexi Starter as it is a much better program and you can upgrade it to do more. You can also get tech support from Flexi. Artcut is a Chinese program and some people are not happy with the translation to English. There is no tech support for Artcut so you must take the time to learn it yourself.