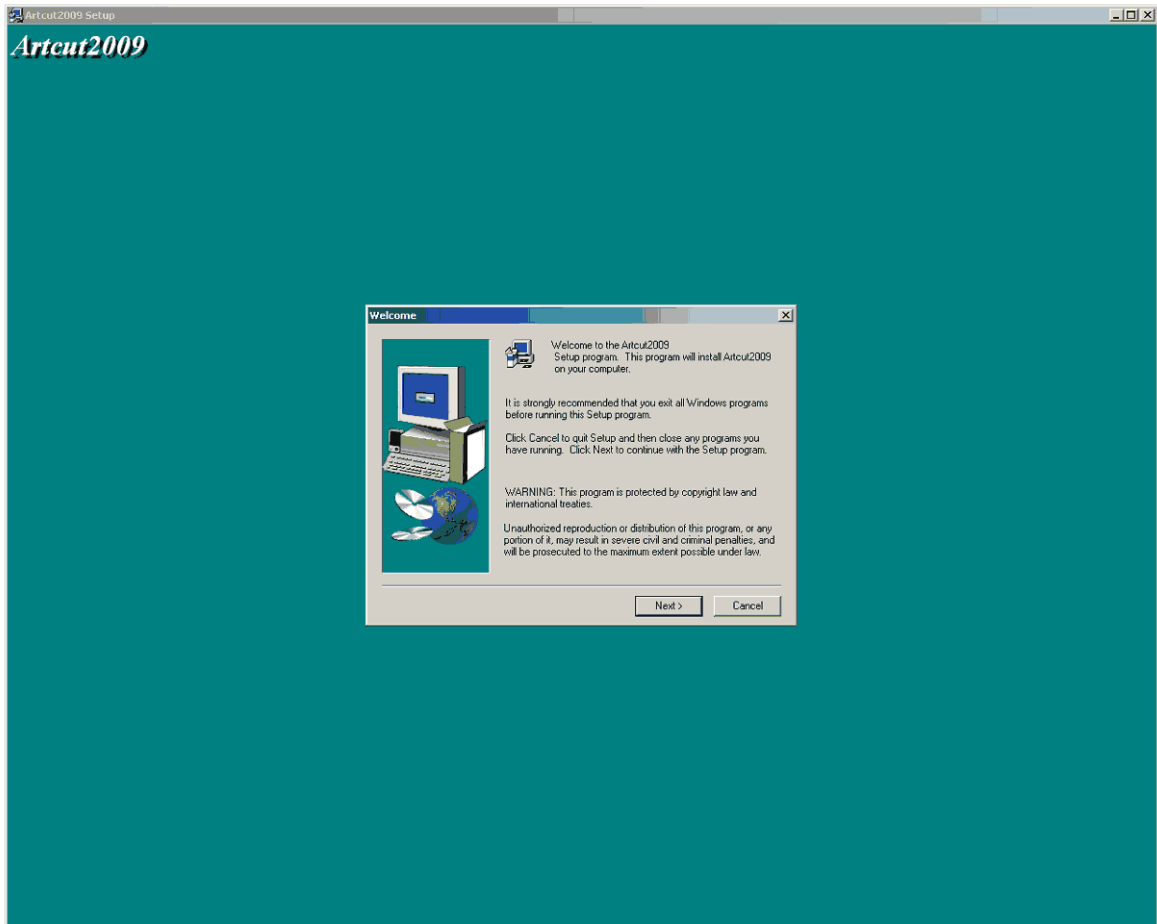


# Artcut 2009 Install Instructions

**Revised March 9, 2009**

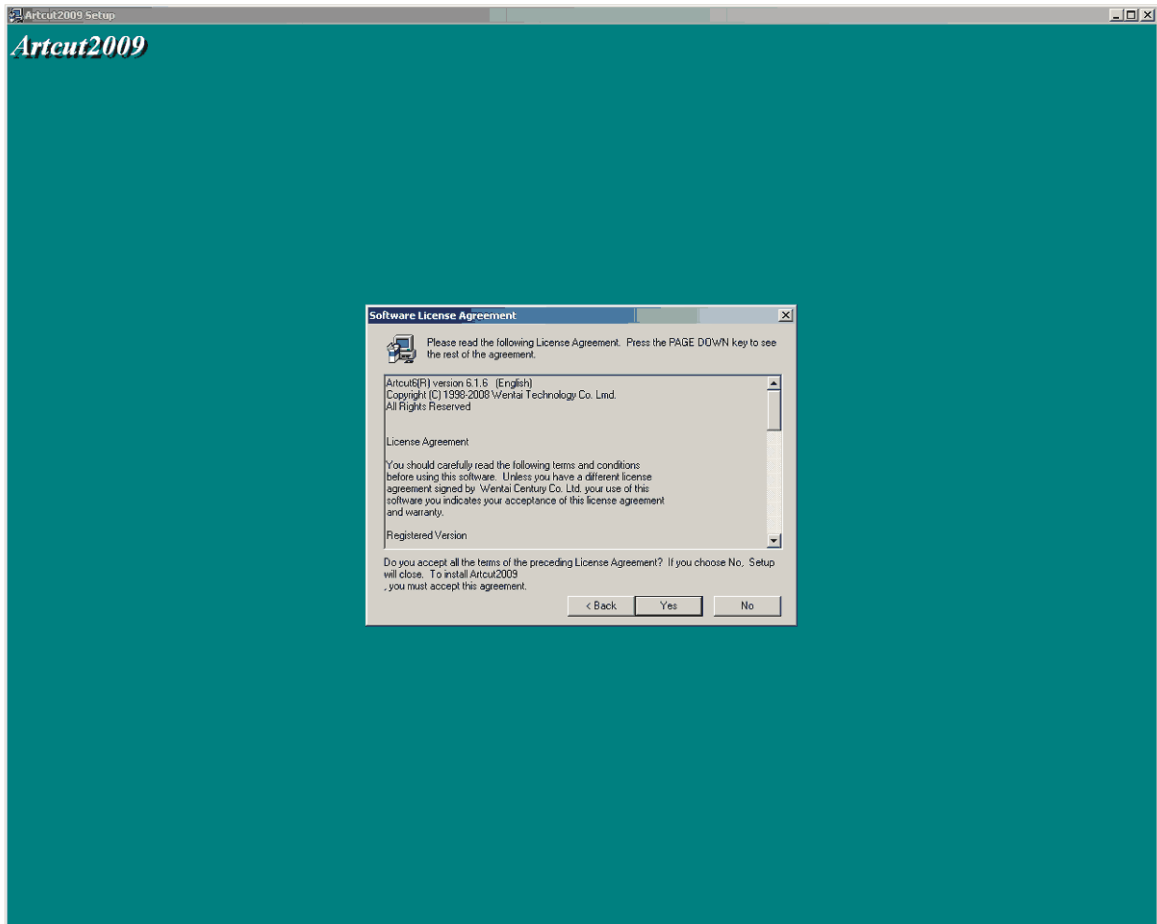
Before installing ArtCut 2009 you will need to install the USB Driver. If you have not installed the USB Driver please do so now. You can find the USB Drive instructions at <http://www.mbkpinternational.com/asplotterusbdriver.pdf>

After you install the USB Driver write down where it is installed. USB (COM1), or USB (COM2). Etc. You will need this information later in these instructions.

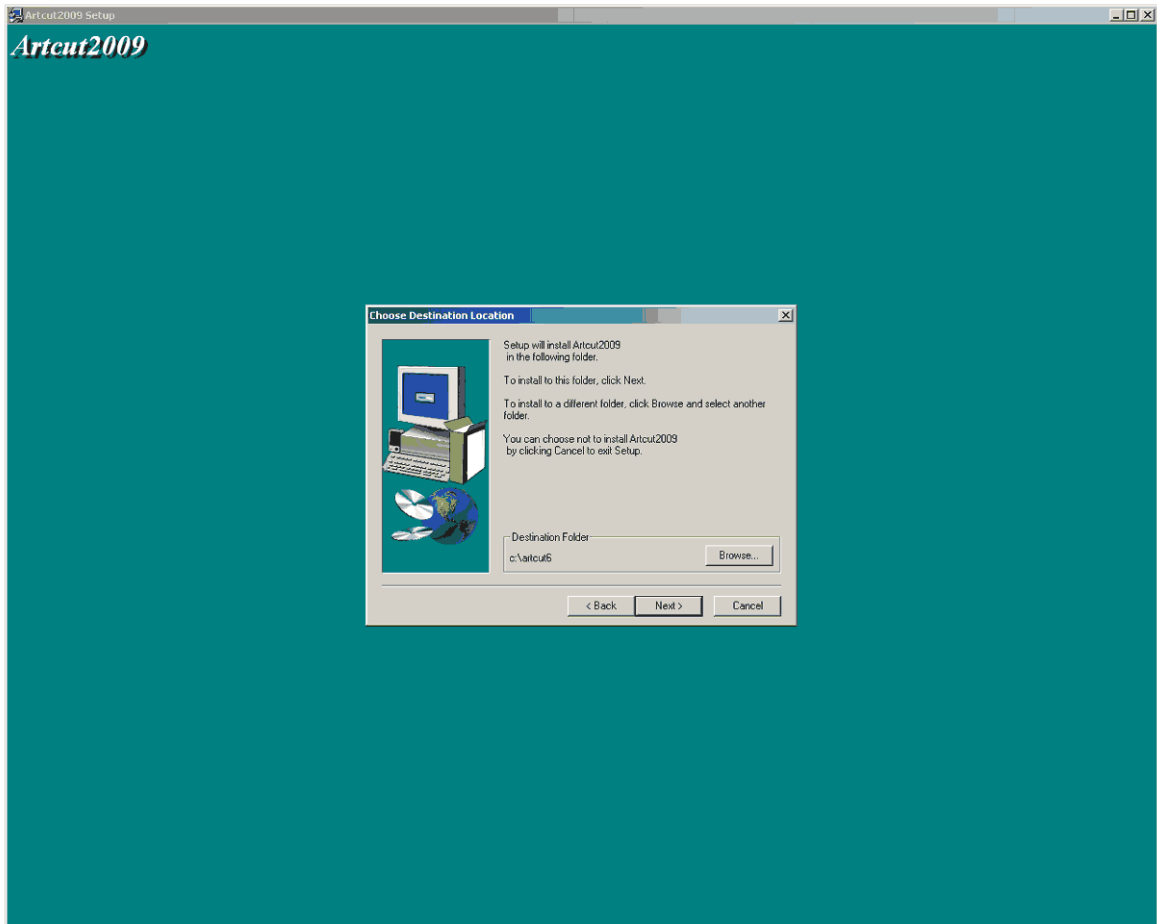


Place ArtCut 2009 CD in your computer CD Drive and run the setup program. You should see this screen.

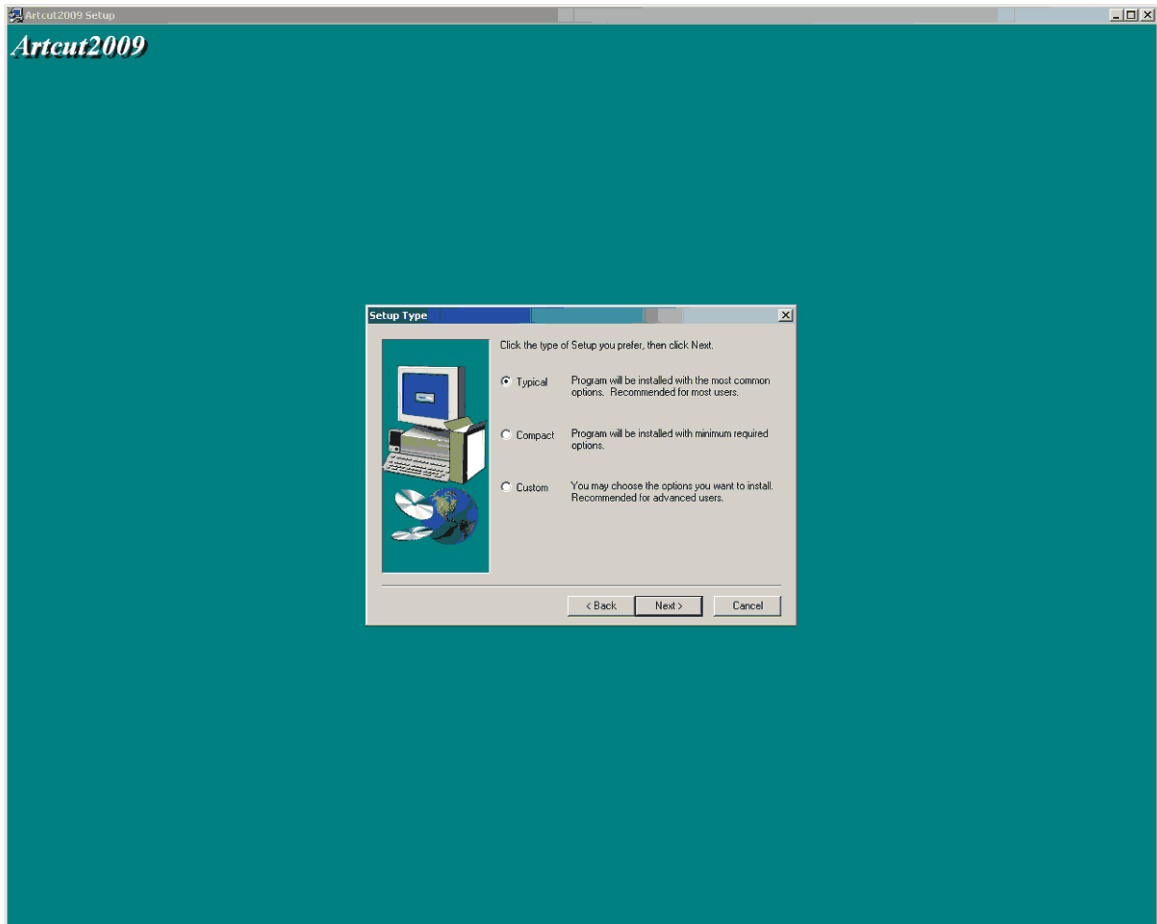
Click next



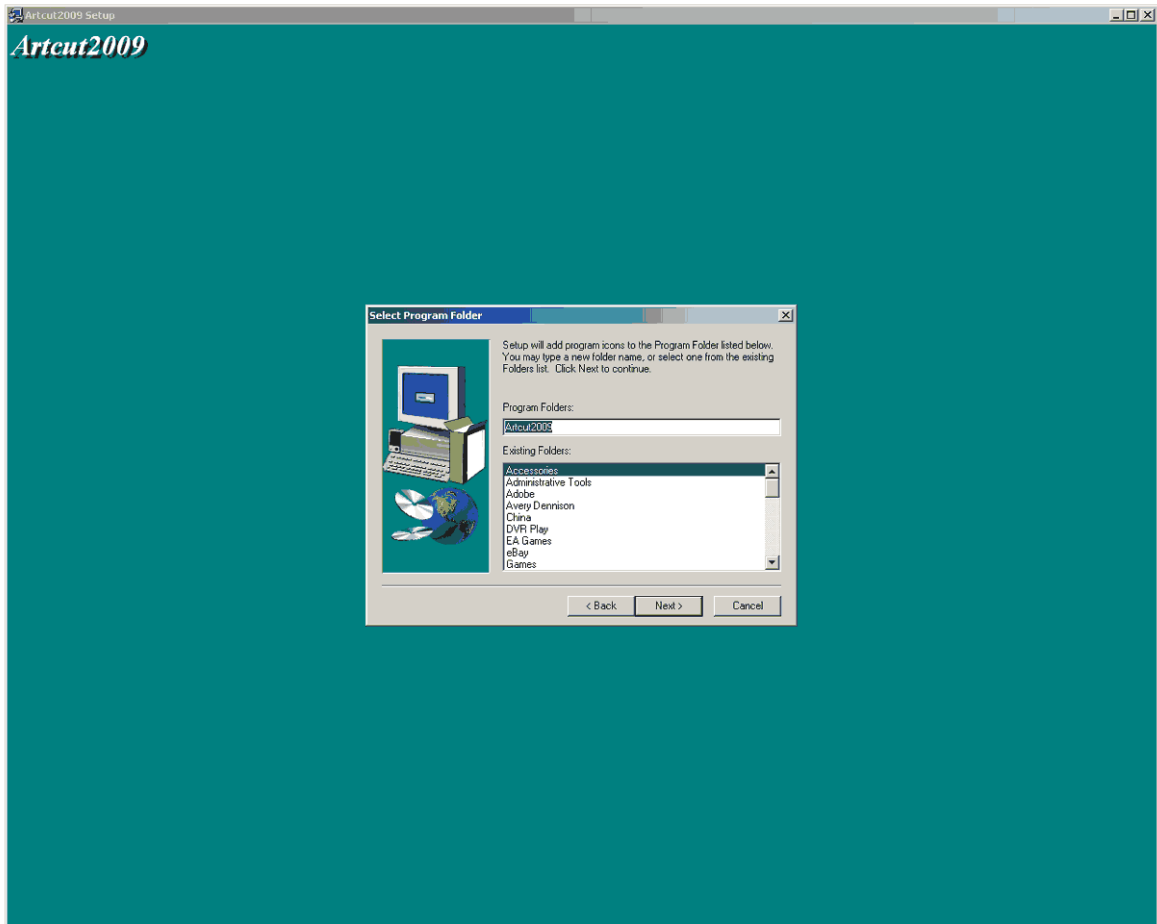
Click Yes to agree with the software license.



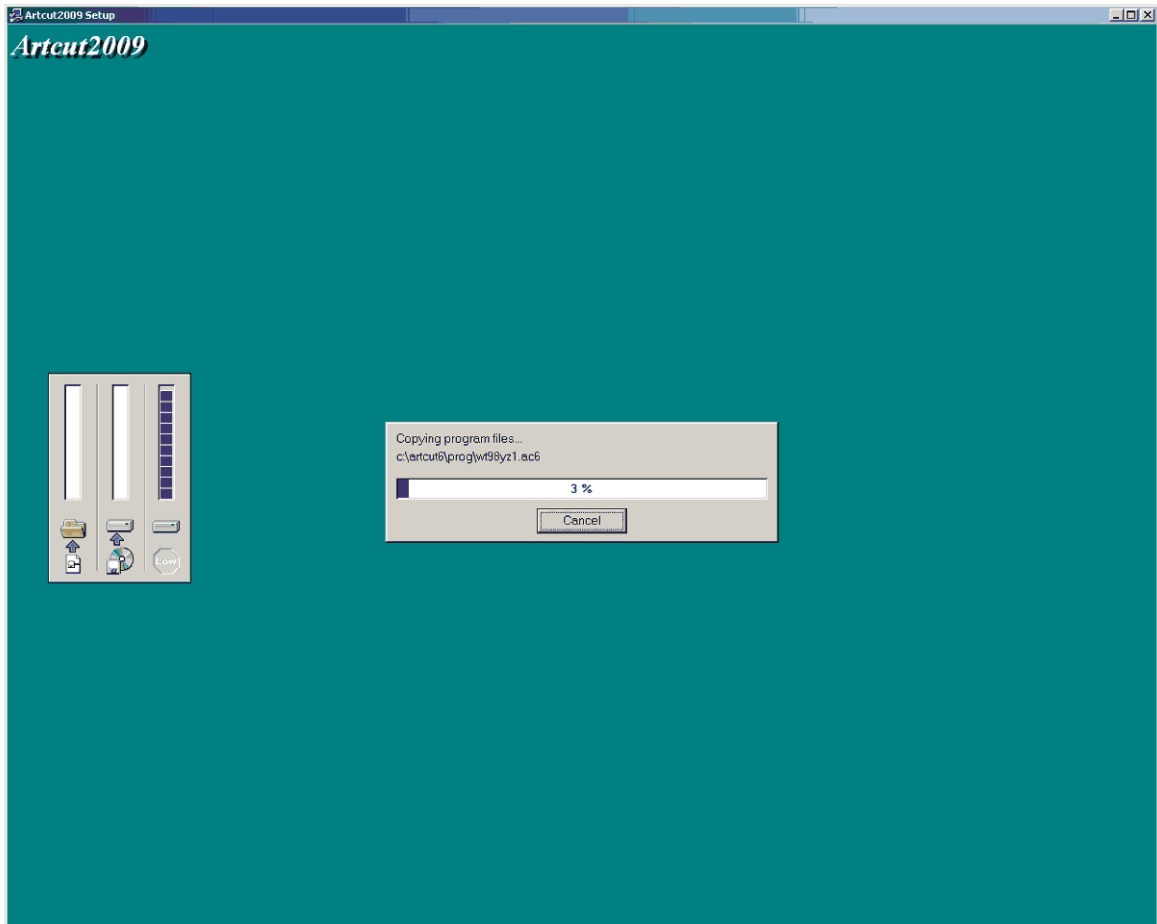
Click Next.



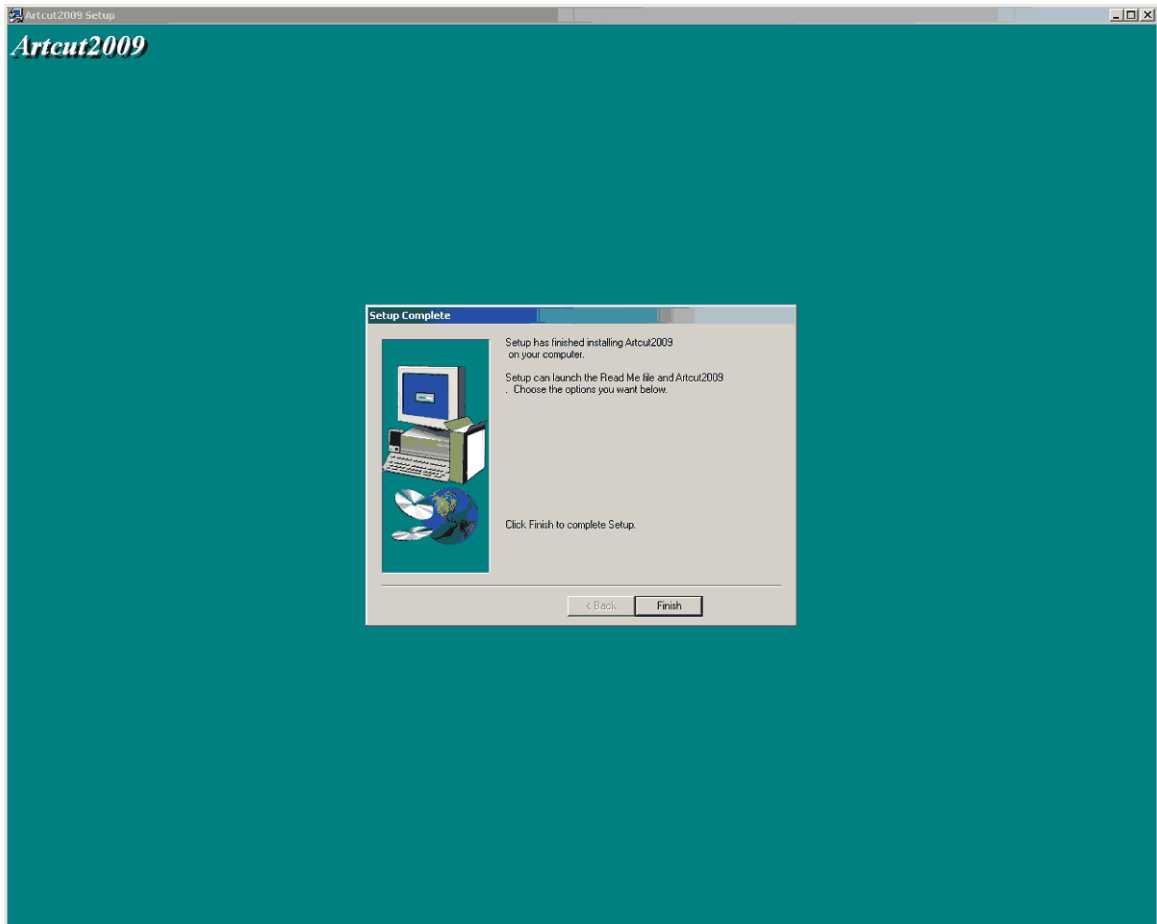
Mark Typical setup then click Next.



Click Next

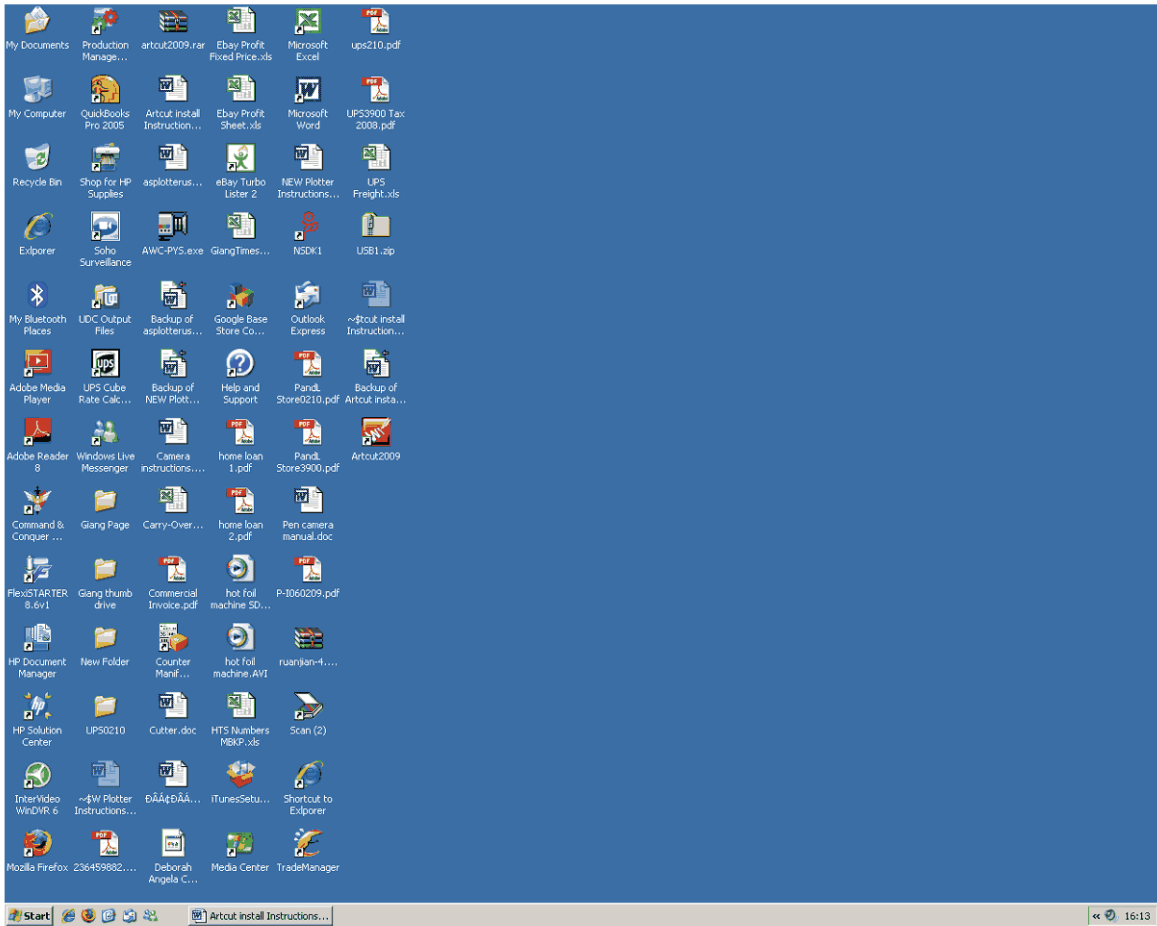


Let program finish installing.

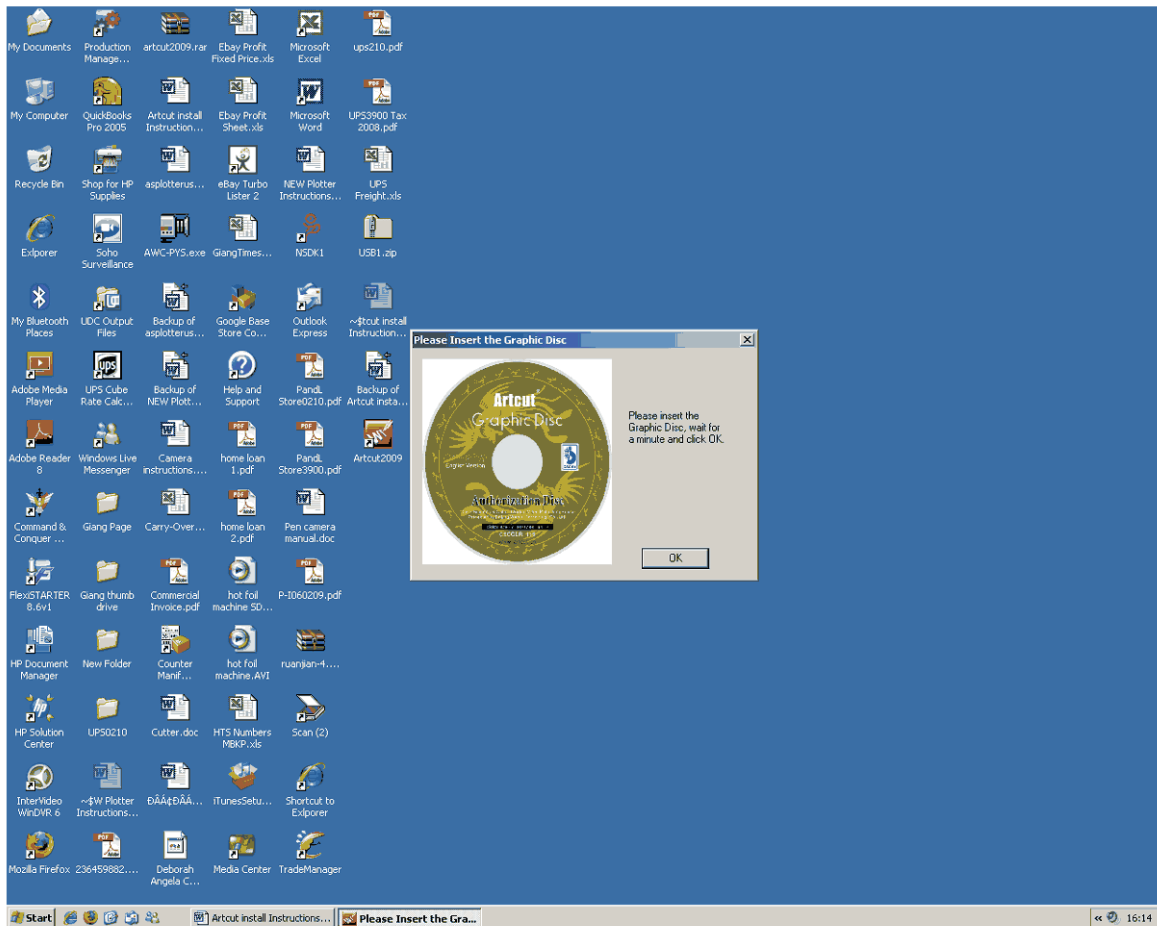


Click Finish

Take CD out of CD drive.

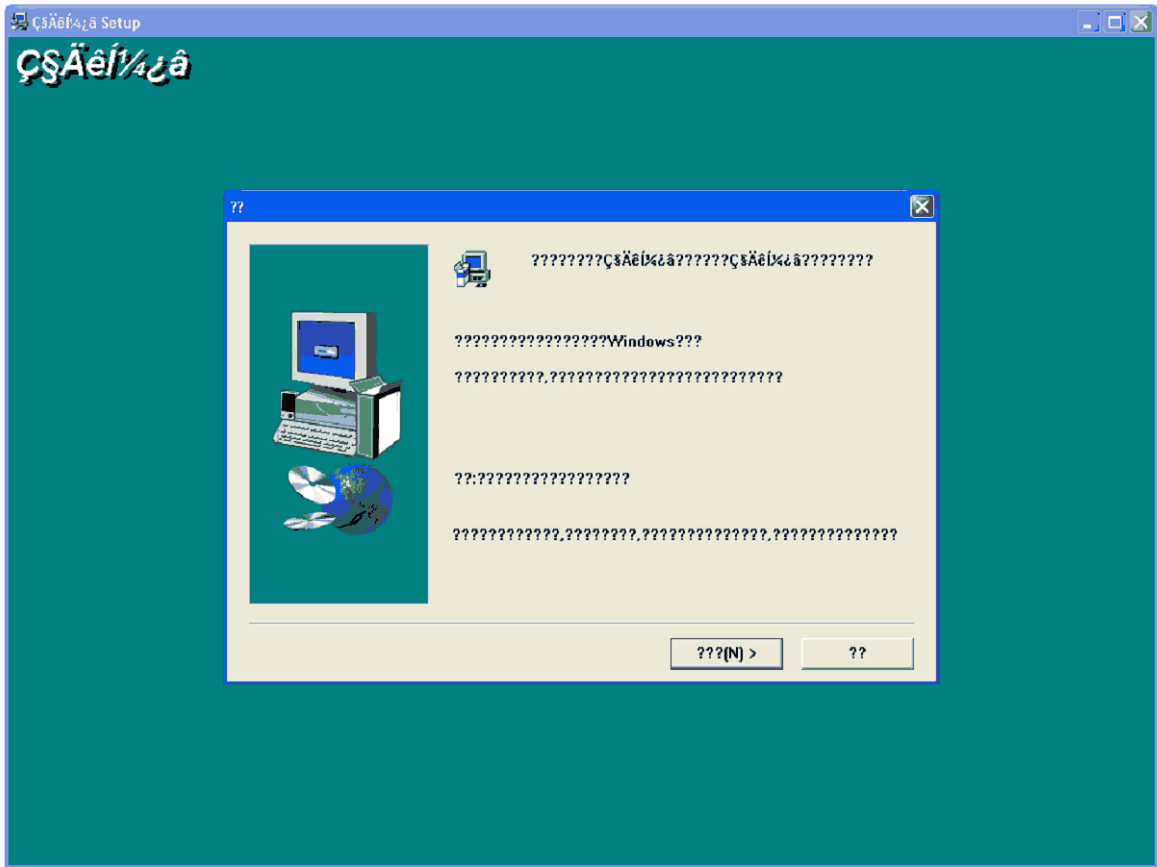


Click on Artcut 2009 icon for the first time.



Artcut 2009 will ask for the graphics CD. Place graphics CD in your computer CD drive, wait about 3 seconds then click OK.

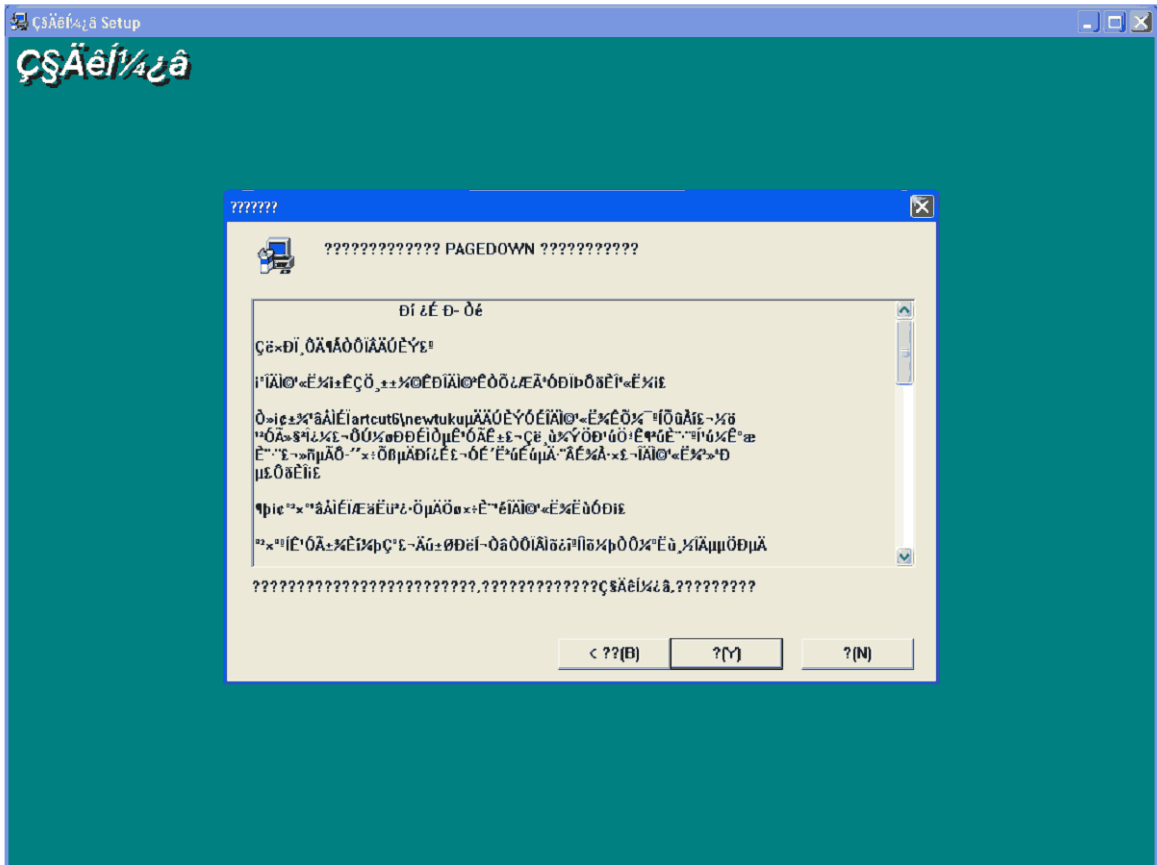
Note: Do not loose this CD. Artcut 2009 will ask for this CD about once every three months. If you loose this CD Artcut 2009 will not be operational and you will have to buy a new copy.



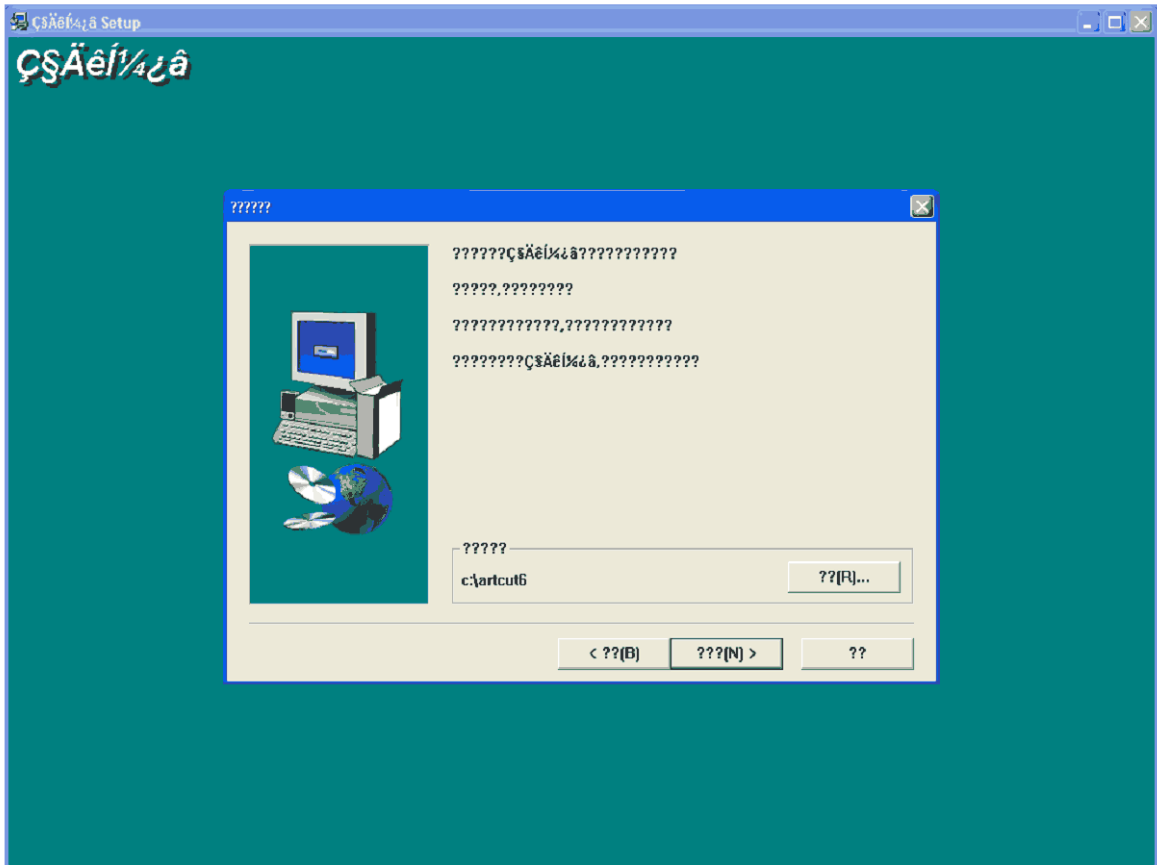
You will see a Chinese graphic as the CD loads. The CD can take up to three minutes to load. Please be patient. You will see this screen after the CD is loaded and ready for install.

Sorry this CD is poorly written.

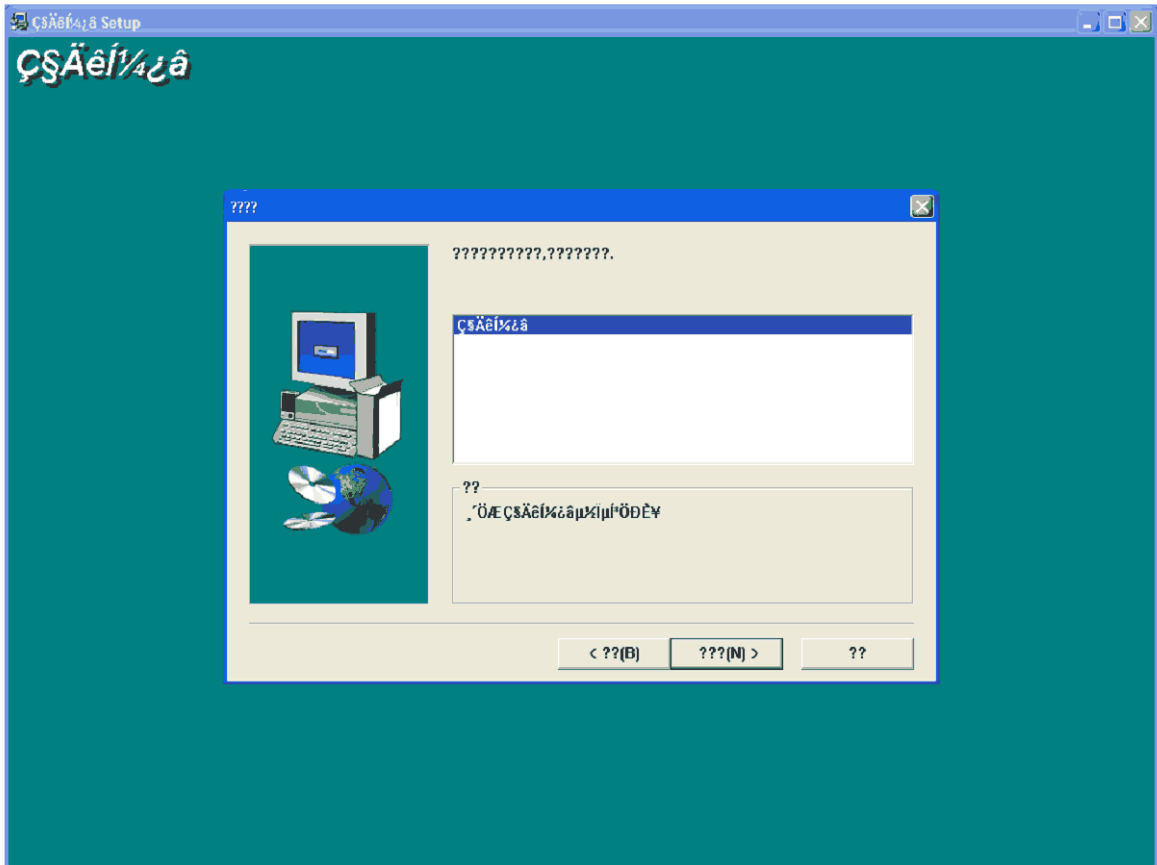
Click the left button



Click the middle button.

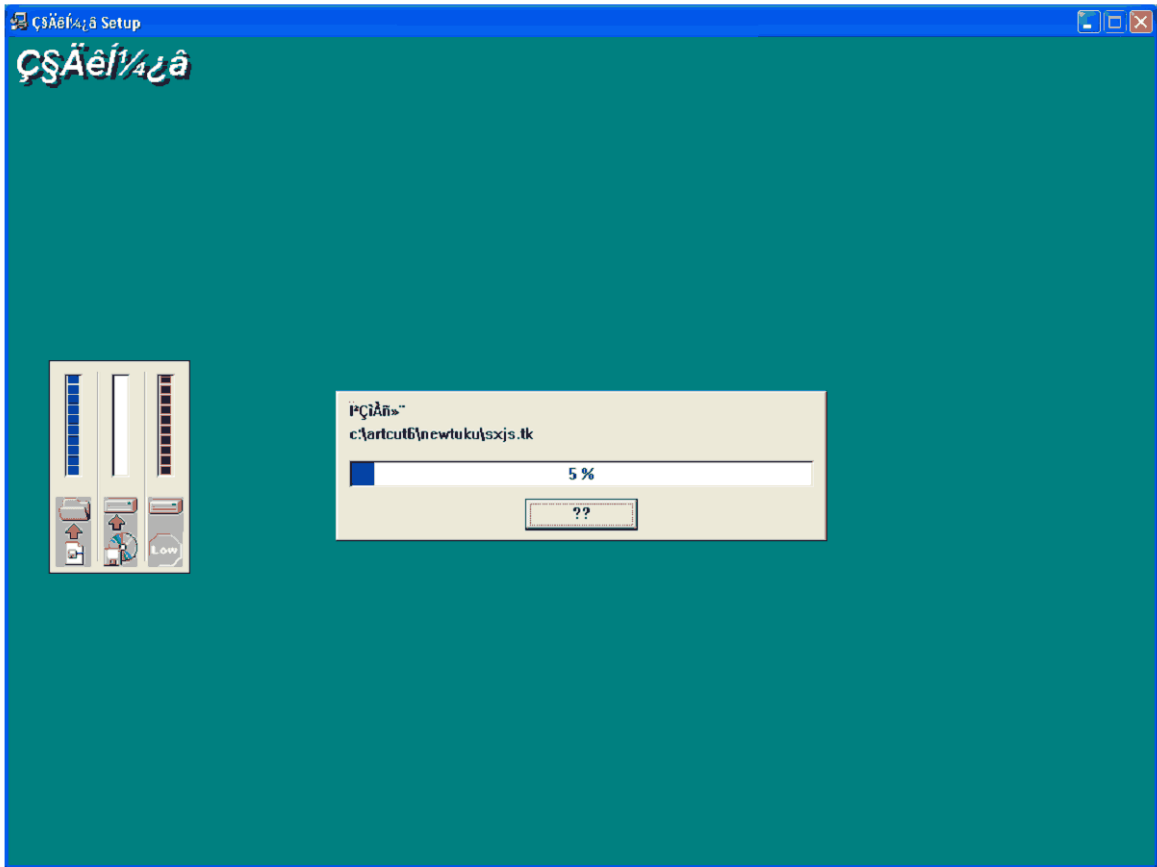


Click the middle button.

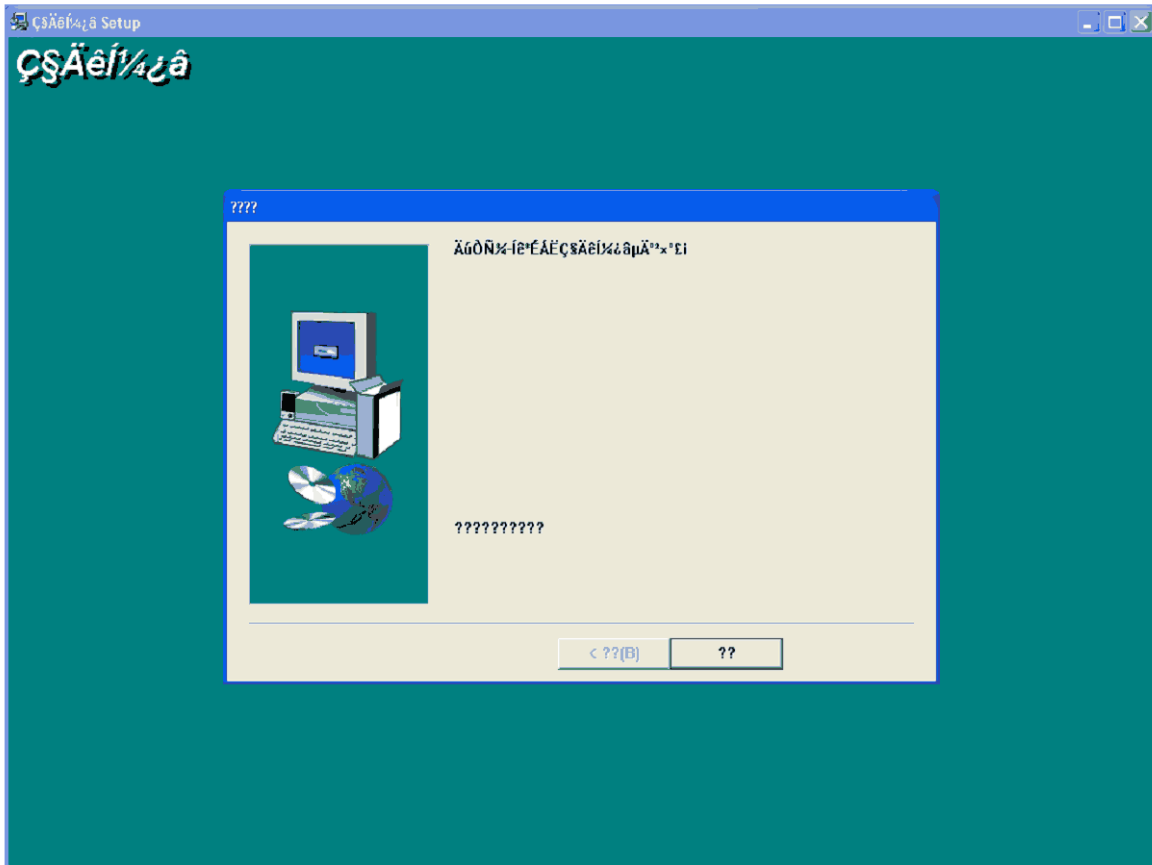


Click the middle button.



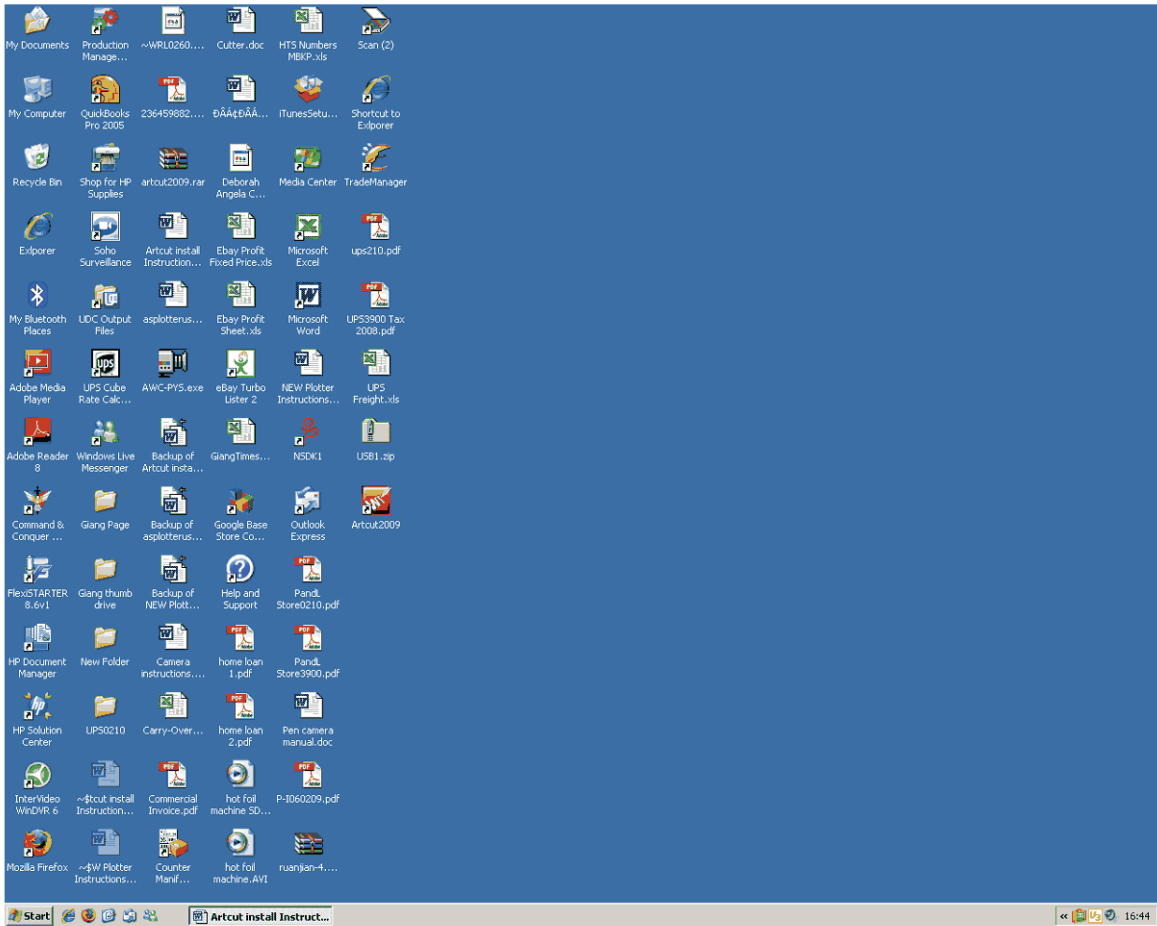


Let the graphics CD finish installing.

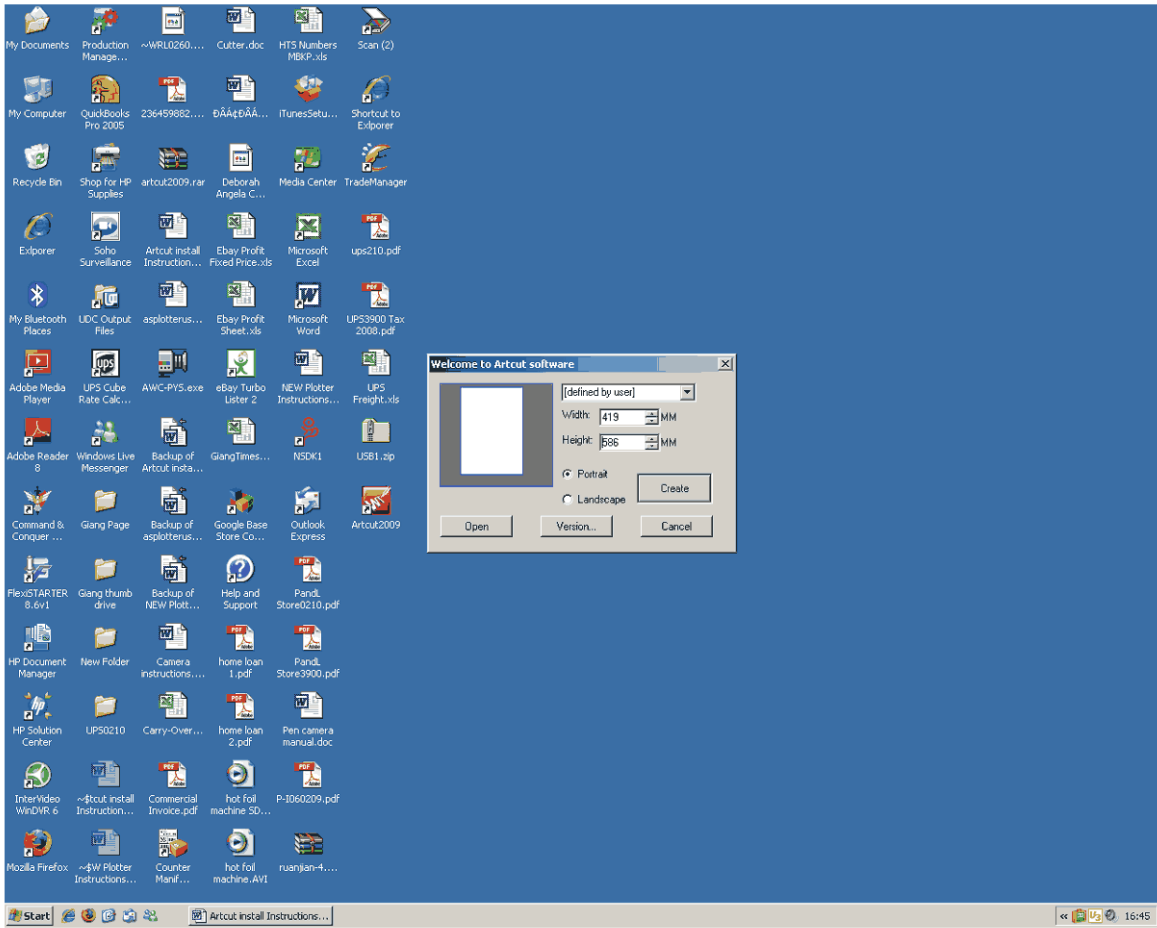


Click the right button. “??”

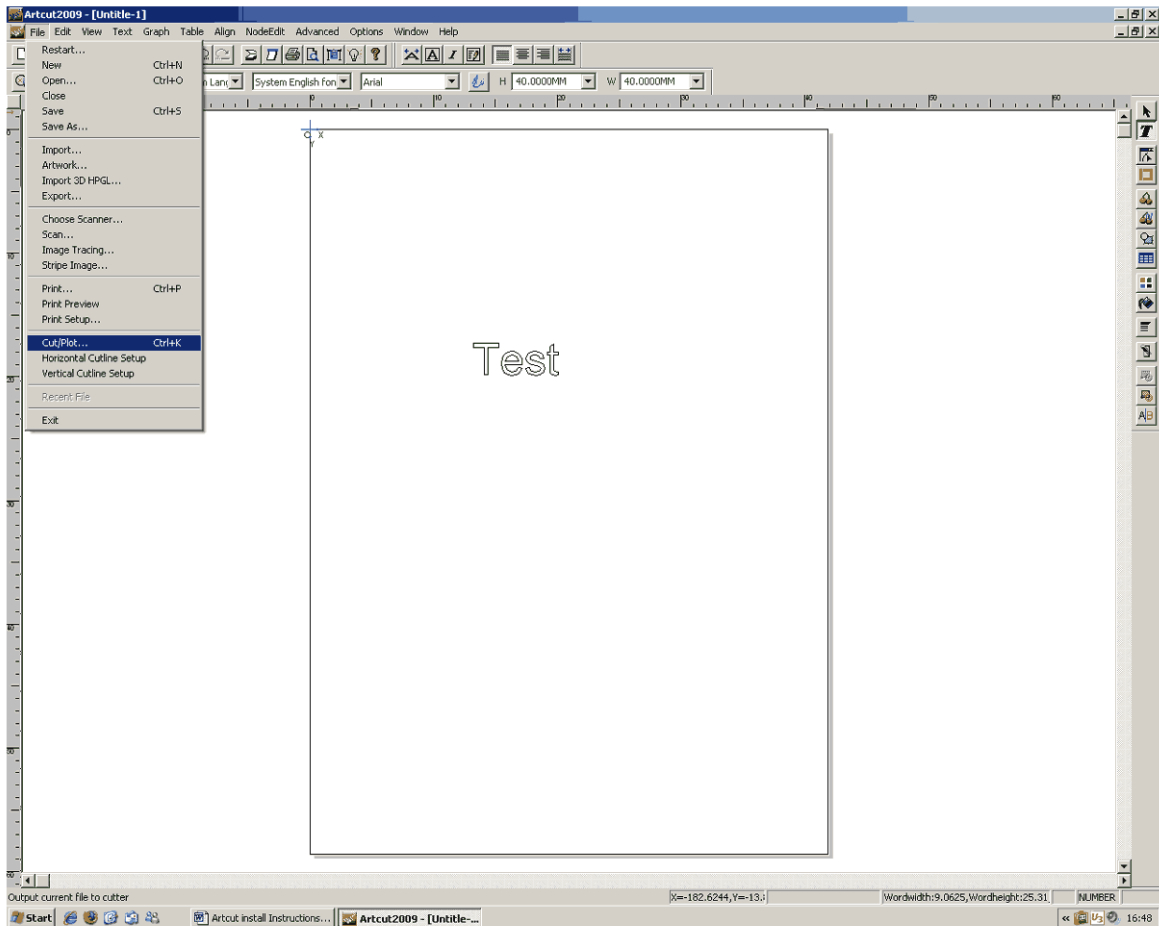
Take the graphics CD out of your CD drive and store it for later use. DO NOT loose this CD. Artcut 2009 will ask for this CD every three months.



Click on Artcut 2009 for the second time.



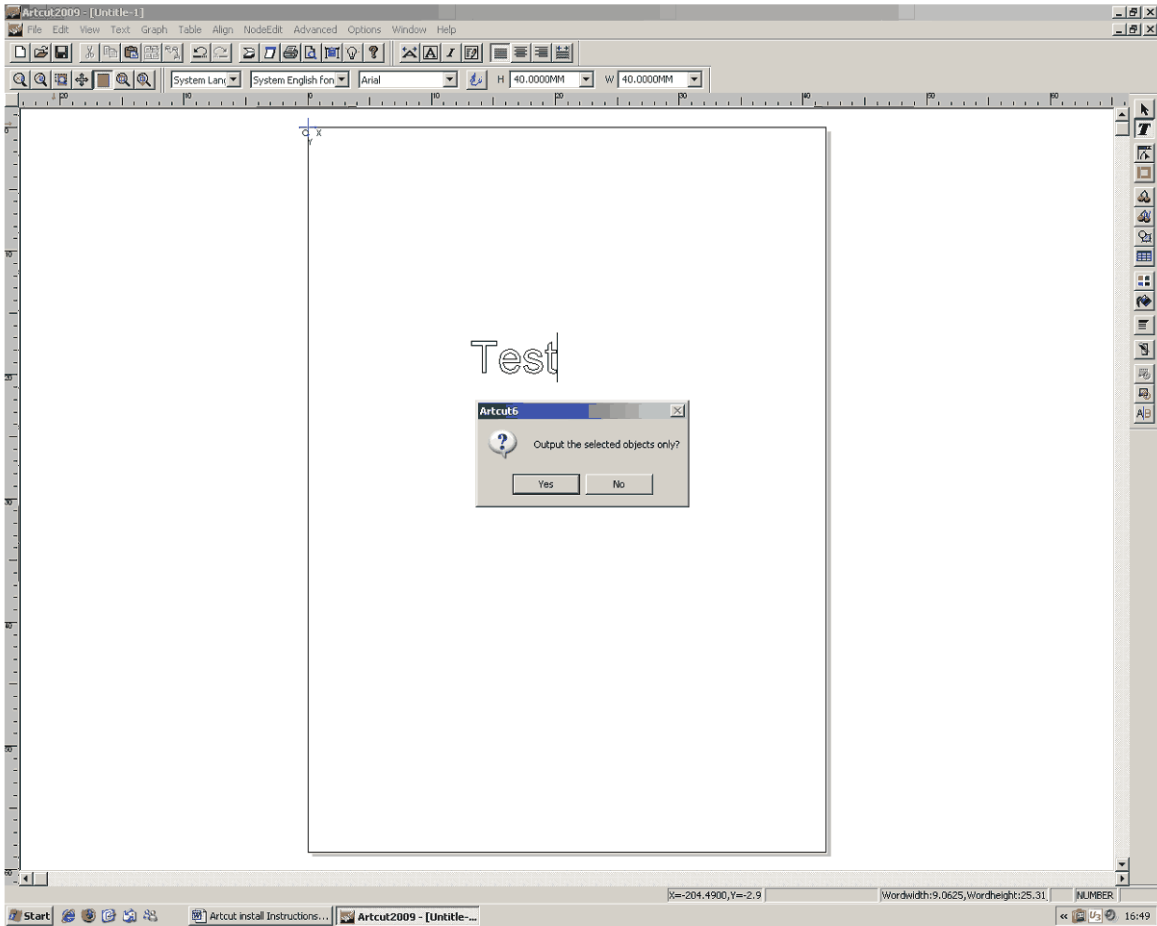
Click on Create



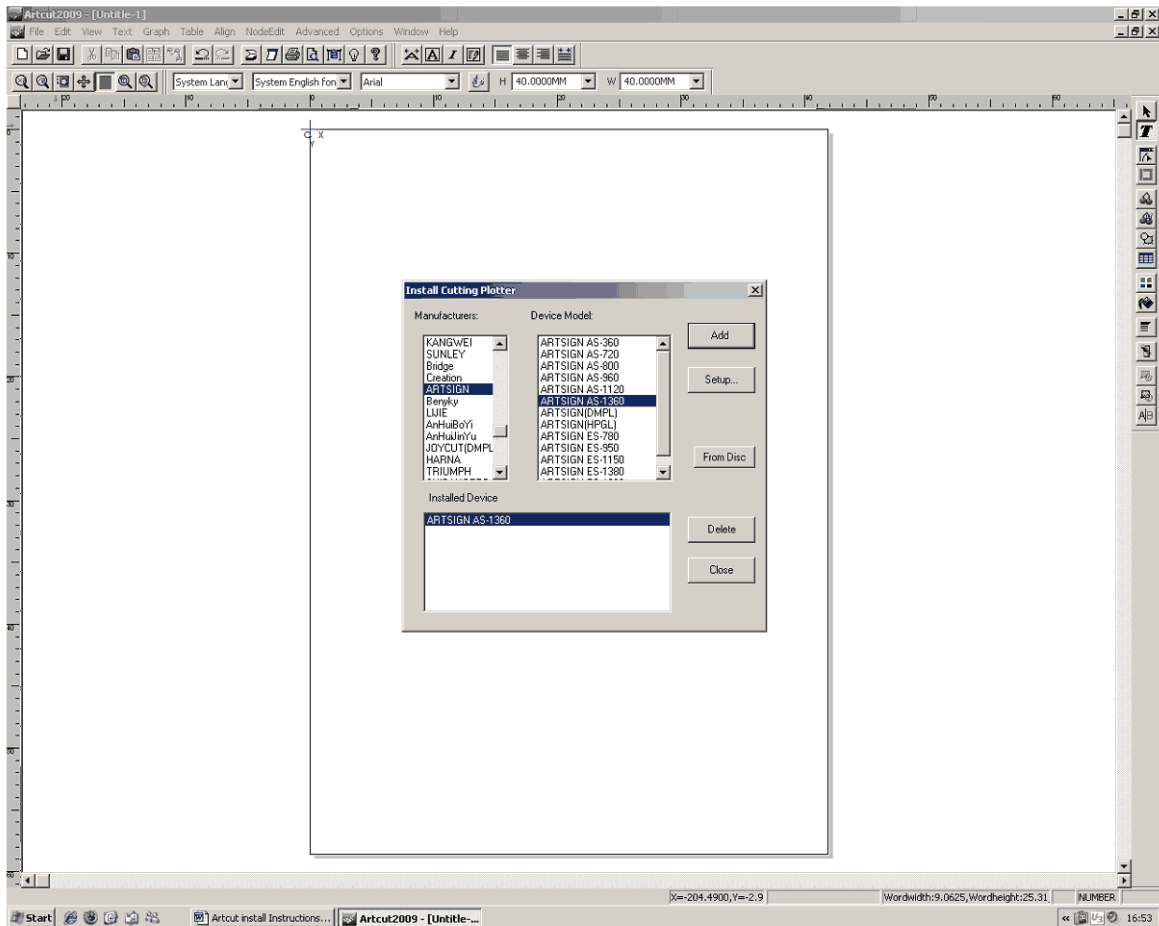
Type in Test.

Click on File

Then click on Cut/Plot



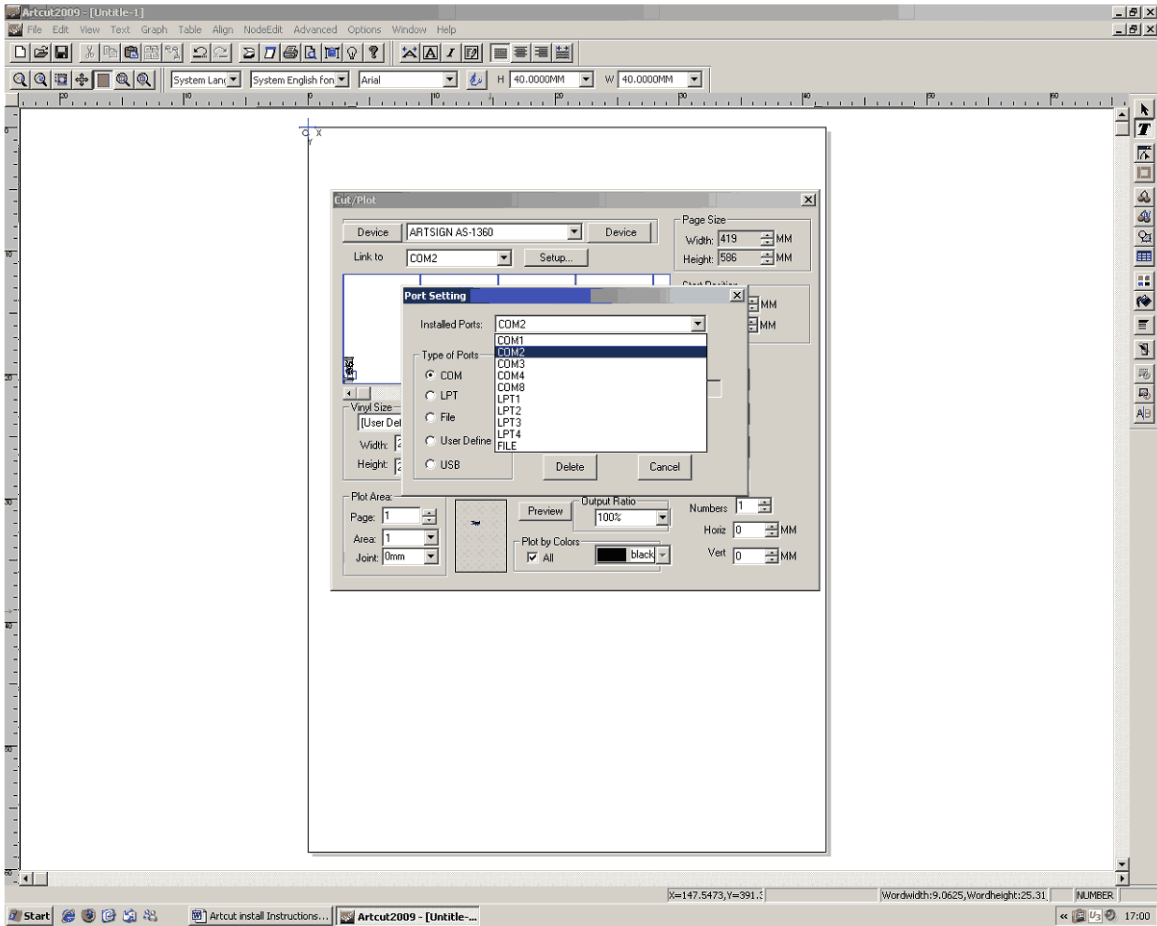
Click No.



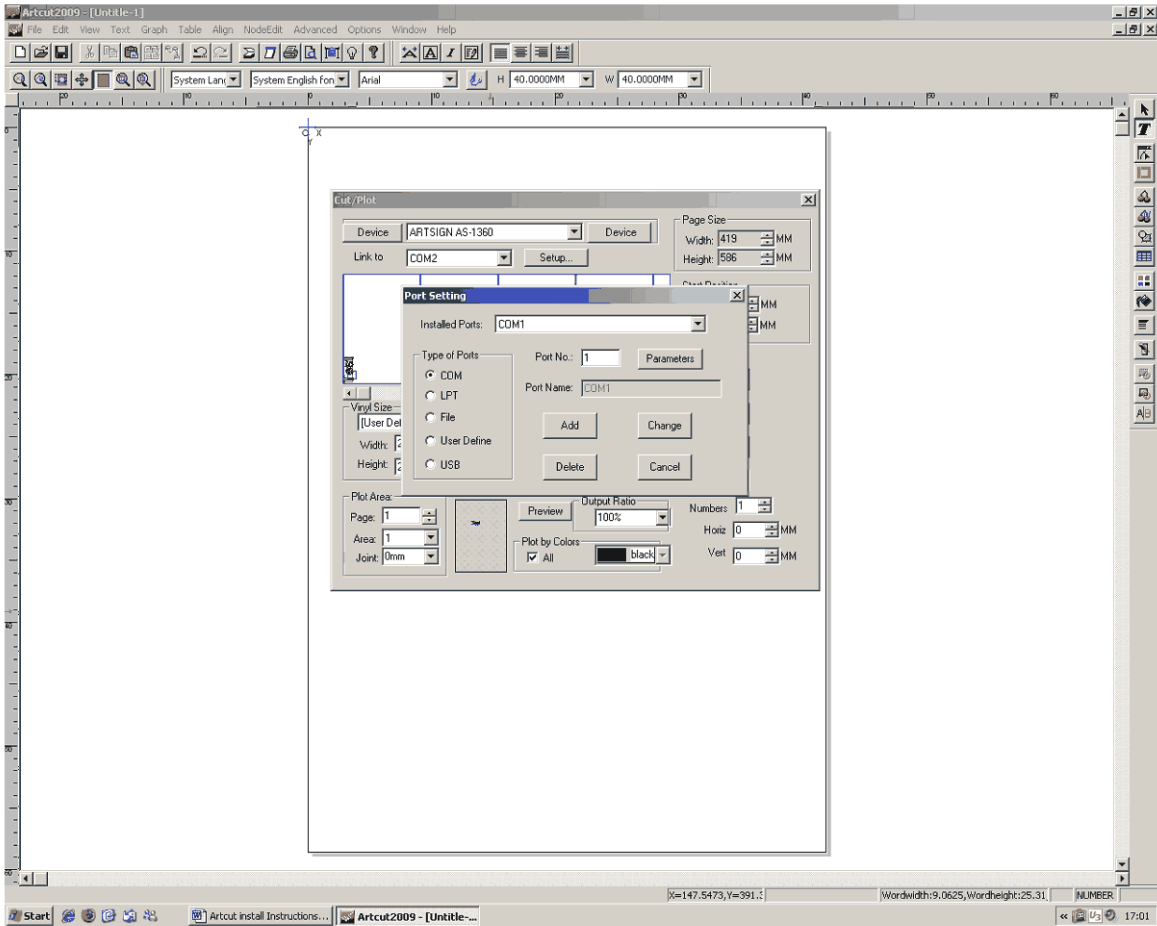
Under Manufacturers select ArtSign. Under Device Model select AS-XXXX. The XXXX depends on the size of machine you have. The 28” model is AS-720, the 38” model is AS-960, the 54” model is AS-1360 and the 70” model is AS-1780.

Now click Add. Then click Close.

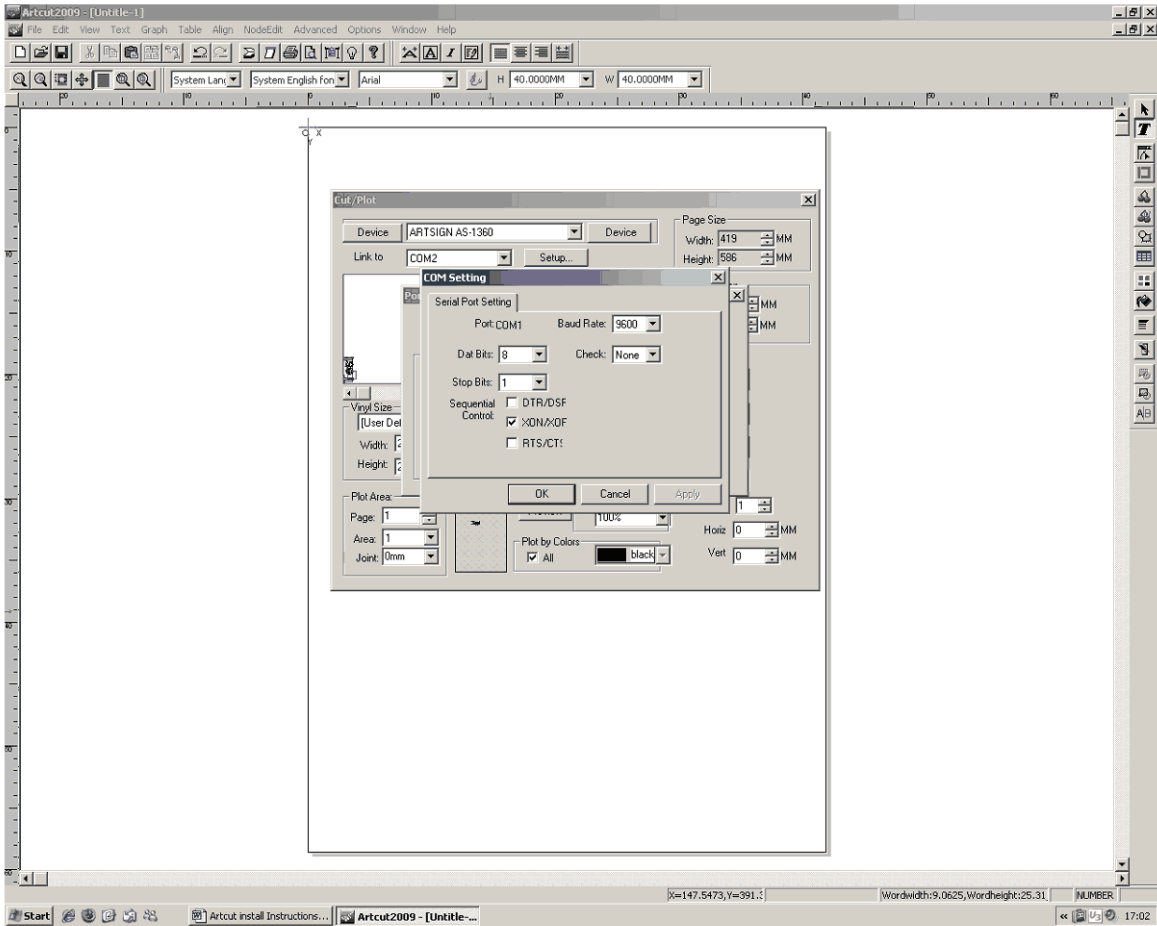




Under installed ports Click on the down arrow and select COM1

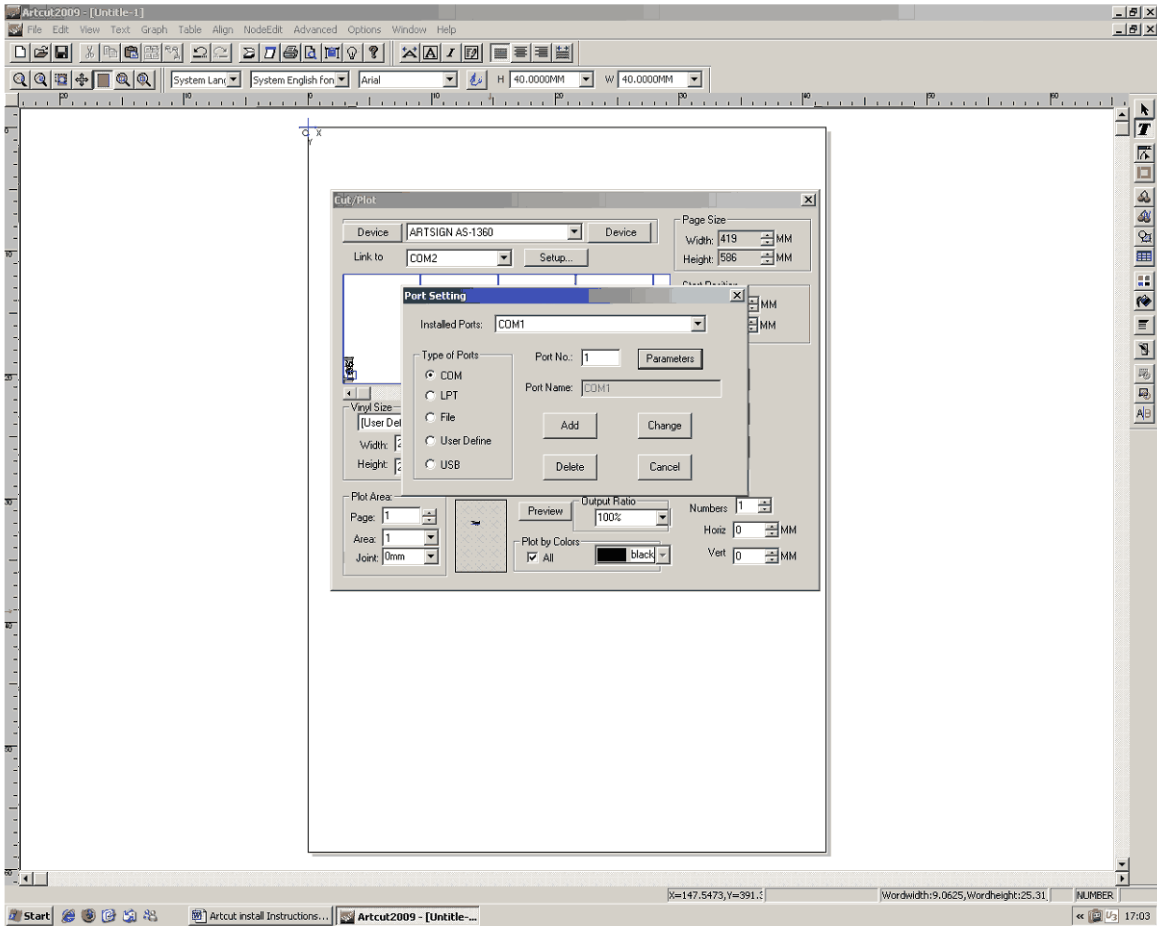


Click the Parameters button.

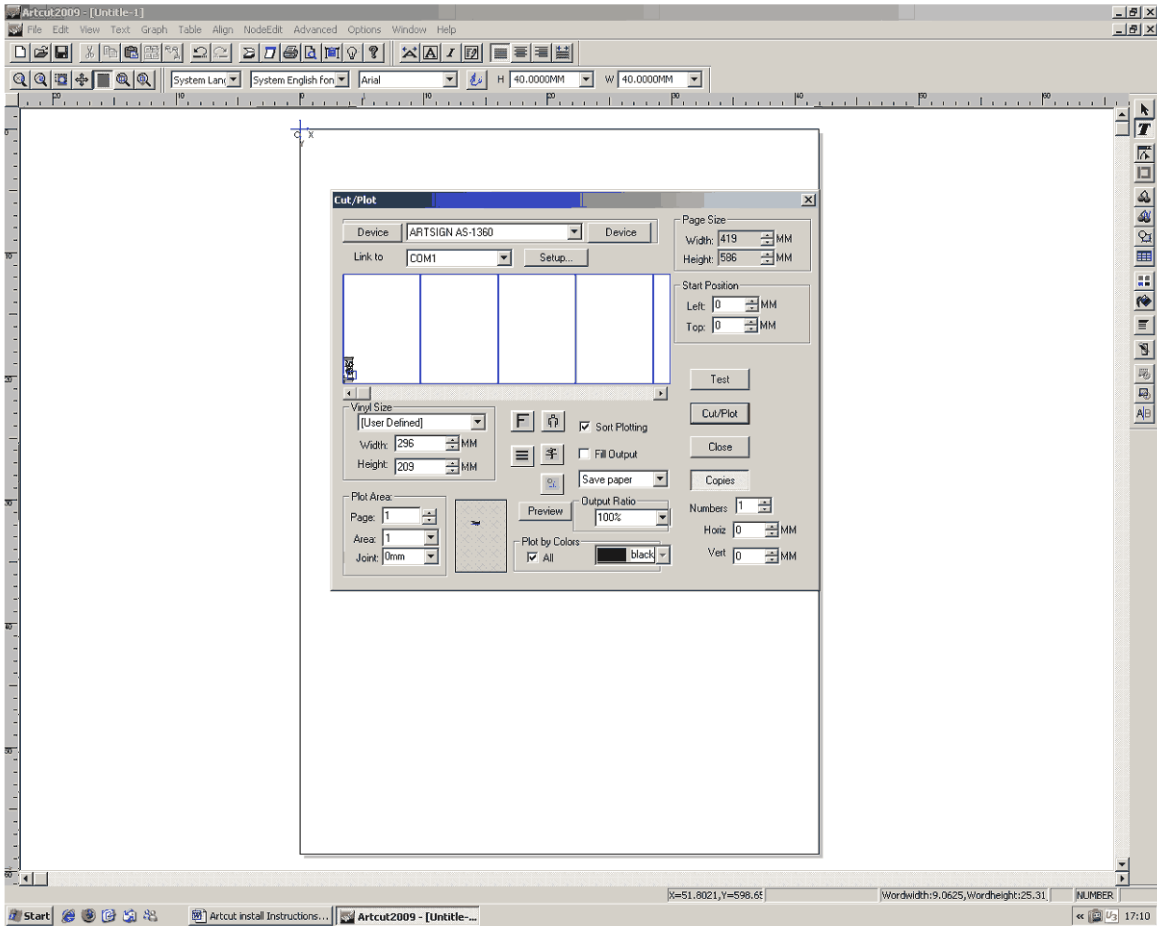


Put a check mark on XON/XOFF. Take off the check mark on DTR/DSF and RTS/CTS

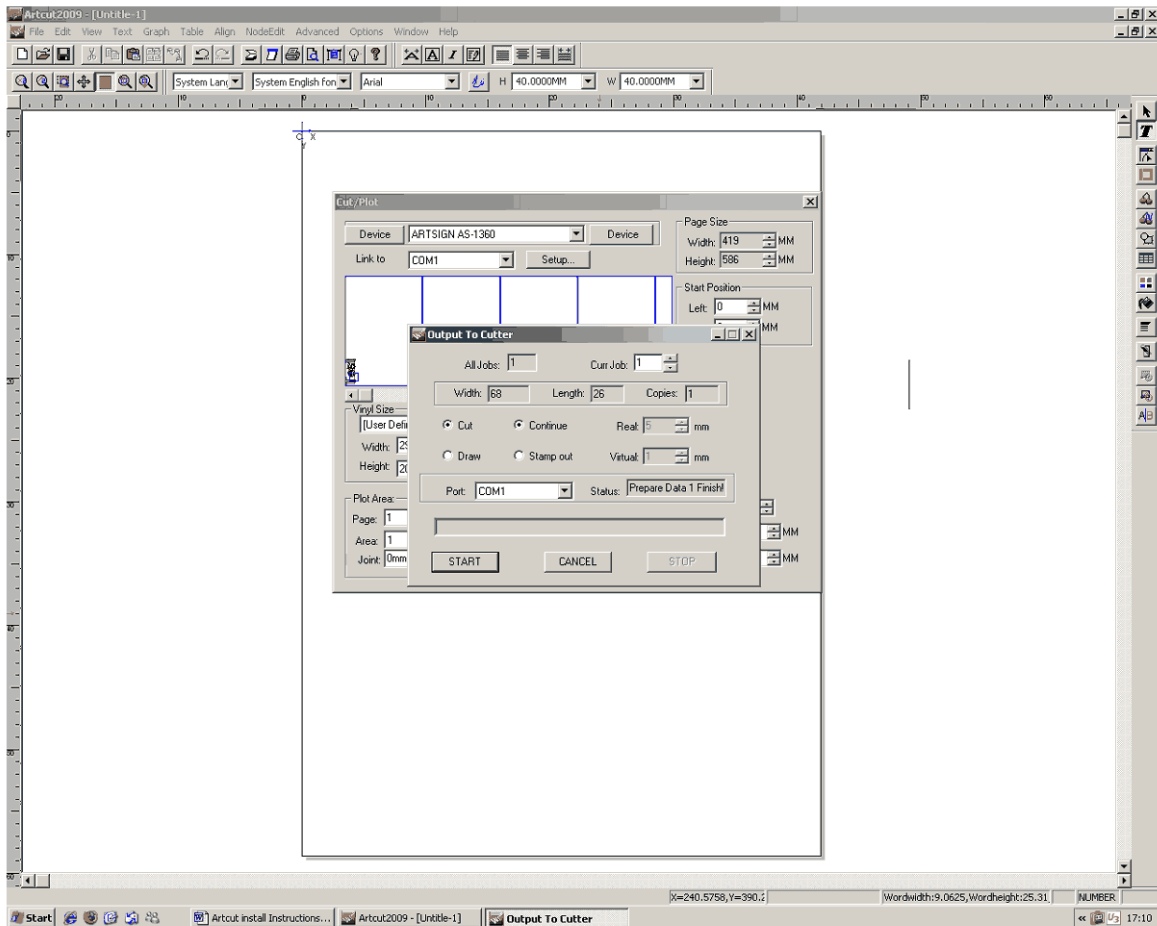
Click OK.



Click Change then exit by clicking on the X in the upper right corner of the Port Setting Screen.



Click Cut/Plot



Click Start. If you did everything correctly then your plotter will cut out the word that you typed in earlier.

Artcut 2009 is a Chinese program and this is all the support we can give for this program. We have found no other support that we can get for Artcut 2009 and from this point you must learn everything else on your own.

If you would like to use an true English written program that actually has an 800 number to call for support we recommend using Flexi. You can purchase Flexi Starter from [http://www.mbkpinternational.com/artcut\\_sd1360\\_cutting\\_plotter.htm](http://www.mbkpinternational.com/artcut_sd1360_cutting_plotter.htm)