

Artcut[®] Software

User's Manual

Artcut[®] Software

Wentai Technology Co.,Ltd.

Content

License Agreement	1
Chapter 1 Installation	3
Chapter 2 Start.....	5
Chapter 3 Basics	6
Chapter 4 Icon Bars	10
Chapter 5 File Menu	13
Chapter 6 Edit Menu.....	19
Chapter 7 View Menu	22
Chapter 8 Text Menu	25
Chapter 9 Graph Menu.....	31
Chapter 10 Table Menu.....	33
Chapter 11 Align Menu.....	36
Chapter 12 Edit Nodes.....	42
Chapter 13 Advanced.....	46
Chapter 14 Options.....	53
Chapter 15 Cut / Plot.....	54

Wentai SOFTWARE LICENSE AGREEMENT

Welcome to ARTCUT.

This agreement gives you certain rights and duties regarding the Software Program, the Users' Guides and the CD Disc that you are licensing from Wentai Co.. The Software Program, the Users' Guides and the CD Disc will be referred to together here as the "Licensed Materials."

YOU AGREE THAT BY USING THE LICENSED MATERIALS, YOU WILL ACCEPT THE TERMS OF THIS AGREEMENT. If you do not accept these terms, please immediately return the Licensed Materials to Wentai Co. or to the distributor from whom you have received them.

1. License grant and termination. Wentai grants you a personal, non-transferable, non-exclusive license to use the Licensed Materials for the ordinary purposes of your business. If you breach any term of this Agreement, this license will immediately terminate and you must promptly return the Licensed Materials to Wentai.
2. Wentai copyright, etc. no copies or transfers, etc. You acknowledge that the Licensed Materials are protected by copyrights held by Wentai's parent company and by third parties. You acknowledge that the Licensed Materials embody trade secrets owned by Wentai's parent and third parties. You may not copy any part of the Licensed Materials for any purpose. You may not disassemble, decompile, reverse engineer or make changes in the Licensed Materials for any purpose. You may not disassemble, decompile, reverse engineer or make changes in the Licensed Materials. You may not

loan or transfer the Licensed Materials to any third party. You may not allow any third party to use the Licensed Materials or to make copies of them. You may not emulate, replace or modify the CD Disc.

3. Warranty, disclaimers, remedies. Wentai warrants that the Disc containing the Software Program. WENTAI DISCLAIMS ALL OTHER EXPRESS AND IMPLIED WARRANTIES REGARDING THE DISC AND THE LICENSED MATERIALS. You agree that your only remedy for any breach of the above warranty will be that if you discover any defect in the Disc within 30 days after receiving them, Wentai will provide you with non-defective Disc.
4. No damages beyond Purchase Price. You agree that if, in connection with your use of the Licensed Materials, you incur direct or indirect injury of any kind, including injury to persons or property or lost profit; neither Wentai nor any third party shall be liable to you except for the Purchase Price.
5. Governing law. This agreement is governed by the laws of China and International treaties.

Copyright 2000, Wentai Co LTD
ALL RIGHTS RESERVED

Chapter1 INSTALLATION

1. Requirement for your computer system

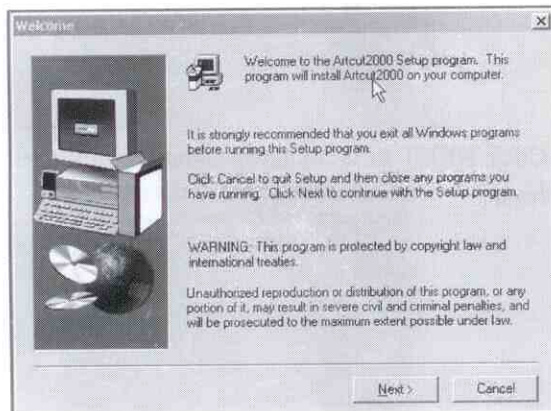
- 1.1 Operation system: Windows9X/Me/2000/XP/Vista;
- 1.2 CPU: 486 or later;
- 1.3 RAM: minimum 32 (MB);
Hard disk: 1GB
- 1.4 Monitor display: 800X600

2. Installation

2.1 Running Setup.exe program

- 1) Insert the Artcut Disc into CD-ROM.
- 2) the setup program will be running automatically.
- 3) If not, click start->run button to run Setup.exe program in "Artcut " Disc.

The screen will display as:

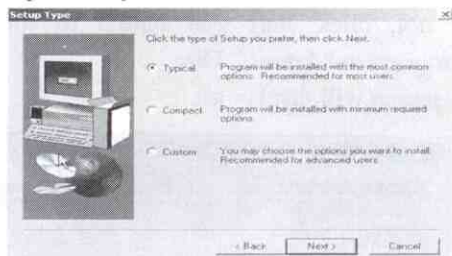


2.2 Click Next, the License Agreement is shown, click YES to continue installation;

2.3 The default destination folder of installation is C:\ARTCUT6. If you want to change the destination folder, please click BROWSE button to choose a new folder.

2.4 After choosing destination folder, click Next and the following dialog box is shown. There are three options of installation:

- Typical: Essential program file, help and some font files;
- Compact: Essential program files only;
- Custom: Essential program files, and other components you would like to install;



2.5 Click NEXT to continue installation until the screen displays:



2.6 Click FINISH to end setup

Chapter 2 START

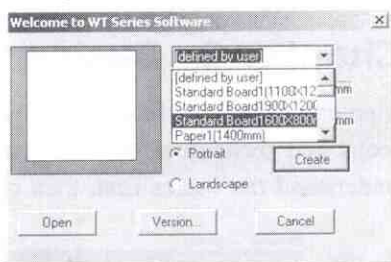
1. Get in The Software

1.1 Select Program Menu from Start, Click WT Artcut or WT Artgrave.

1.2 At your first time entering Artcut software, the program will prompt to insert **Artcut Graph Disc** into CD-ROM to confirm the system.


2. Page size setting

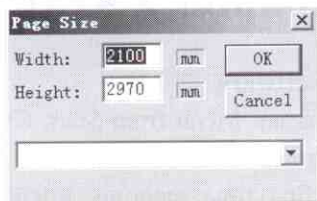
1) Every time when the program is running, the following page size setting dialog box would display.




2) In this case, you can set the size according to your need. The software would auto separate layout in multiple pages to plot when the page size setting is beyond scope of the plot.

3) Click the arrow beside the text field to select various preset models with fix size, such as standard showing board, standard paper, etc.

4) You can set page size when the program is running. Select Page Size command from Option Menu or Click icon  to get a dialogue panel as:



3. **To Exit** The Software system, there are 3 ways:

- 1) Click the exiting button  on the top-right corner of the Main Window;
 - 2) Choose Exit from File Menu;
- Press hotkey Alt+F4.

Chapter 3 Basics

The Basics is an explanation of how to use basic Artcut commands, icons and techniques to start using Artcut. You should understand the basics first, then continue to familiarize yourself with the program.

Title Bar

Displays the name of the program and file name you are currently working on.

